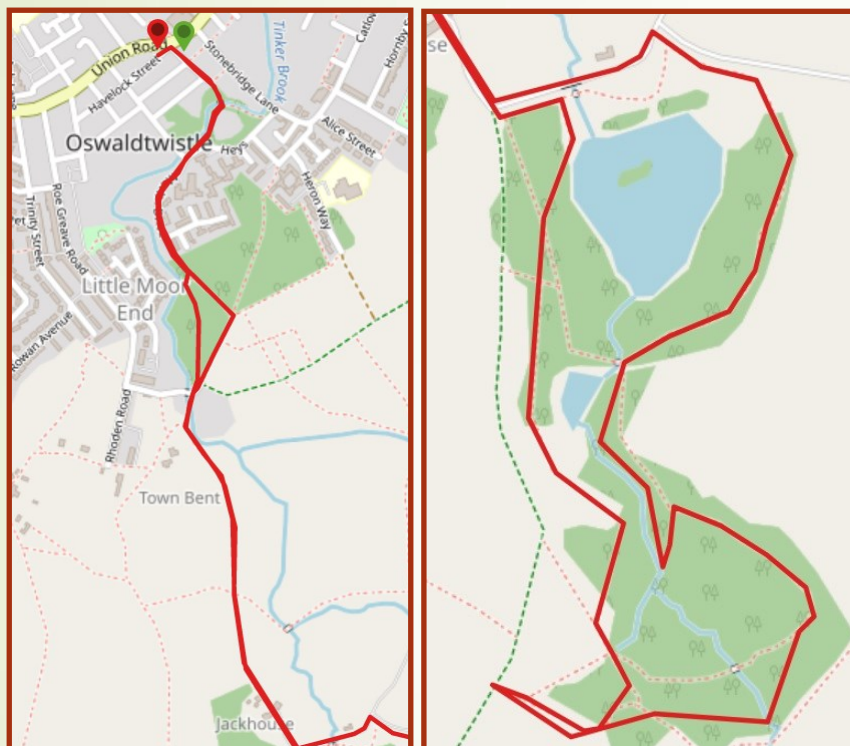


DISCOVER HYNDBURN

Tinker Brook and Jackhouse Nature Reserve



Visiting Jackhouse Reserve provides opportunities for gentle walks within the countryside around the reservoir, through woodland and over wildflower meadows.

Parking: Street parking near the library. There is no parking at Jackhouse Nature Reserve.

Bus Service: Use No 6 or 7 Bus Blackburn to Accrington and return and get off at the Library bus stop. Oswaldtwistle railway station is a few minutes away.

Distance and Approximate Time: 3 – 3.5 miles, 2 – 3 hours with time to explore.

Terrain: A few stiles, tracks, footpaths, & bridleways. Some uneven rough areas with stones. Good main paths at Jackhouse Nature Reserve.

Map: OS Explorer 287 West Pennine Moors 1:25 000 scale

Key to Facilities: Oswaldtwistle town centre nearby. The nearest are at Oswaldtwistle Mills Shopping Village & Garden Centre

Please keep dogs on a lead due to horses and wildlife and follow the Country Code

To get the full version of this map and the FREE route directions you will need ViewRanger. ViewRanger is a digital guide to the outdoors with downloadable route guides, outdoor maps, and powerful GPS navigation features. Their mobile app runs on iPhone, iPad, Apple Watch, and Android smartphones, tablets, and watches. <https://www.viewranger.com/en-gb>



For more information go to www.prospectsfoundation.org.uk For the gpx route use the QRCode on the right



DISCOVER HYNDBURN → Tinker & Jackhouse Nature Reserve... Directions page 2

Information to help you enjoy this walk

The Jackhouse Nature Reserve is a beautiful green area in the heart of Hyndburn. It has been part of local life for many years with generations of residents and dogs walking round the ponds and wandering through the woods. So far new and extended paths mean that the youngest and oldest can use the paths and jogging appears to have become the new Sunday morning pastime.

Before you start this walk we recommend that you download the Explore Jackhouse Nature Reserve booklet and Map from [LINK](#). Visiting Jackhouse Reserve provides opportunities for gentle walks within the countryside around the reservoir, through woodland and over wildflower meadows.

Wear walking boots or sturdy boots on your visit as the approach to the reserve is uneven with well-worn paths. Muddy in places.

This route does not use footpaths suitable for wheelchairs, trampers or prams.

Access for All - Newly laid paths at Jackhouse Nature Reserve mean that it is now accessible to everyone. But you need to park and enter the reserve from a different route to this 'walking only route' i.e. Fielding Lane and Pot House Lane. There is no parking at or near the reserve.

START from Oswaldtwistle Library **289 Union Rd, Oswaldtwistle, Accrington BB5 3HS** this is a circular walk to introduce walkers to the Jackhouse Nature Reserve area.

With your back to the library entrance walk to the junction of Union Road, Havelock Street and

Melbourne Street, turn right and walk along Melbourne Street.

At the end of the street you reach a small bridge. Walk over the bridge and turn right along the footpath following Tinker Brook on your right until you leave the footpath at the road.

Turn right along Merlin Drive and follow the road round until the dead end.

SD 739270 Turn right and take the footpath through the centre of the woodland. If you take a wrong path and get to the allotment track turn right and walk to the point where four paths meet.

SD 739268 Keeping the allotment bridleway behind you, the bridleway over the bridge to Back Rhoden Road on your right and the other allotment bridleway on your left take the narrow footpath ahead towards Town Bent.

SD 739267 Once you have crossed over the Tinker Brook this footpath forks so take the narrow footpath on your left with Town Bent allotment on your left. There are several stiles on this route. The narrow footpath becomes wider and more of a track. When the footpath opens out into fields keep straight ahead

Go ahead and over a stile onto another narrow path. You are now on Cobbs Lane!

To the left of Cobbs Lane is a mine shaft. Town Bent colliery, was one of the 15 coal mines operating in the Oswaldtwistle and Church area in the 1800s – at its peak the East Lancashire coalfield, centred on Burnley, Accrington and Rossendale, had around 50 pits. Coal mining was second only

to textiles as the major employer in the area. Oswaldtwistle's three major mines, Aspen, Lower Darwin and Town Bent, which closed in 1925, together employed some 1,000 men. There was a fire at Town Bent Colliery in 1907.

SD 740262 You will reach Jack House on your right. Follow the bridleway that bends around to your right. Ignore the bridleway track on your right (this may be blocked by a gate to stop vehicles using it and to prevent fly tipping). Now walk along Pot House Lane bridleway until you reach a track which is a footpath on your right.

SD 742261 The entrance to Jackhouse Nature Reserve is at the junction of the bridleway and footpath. There is a notice board and an information board at the entrance.

Jackhouse Reserve gets its name from Jackhouse, one of the oldest buildings in the area. Jackhouse stands on the corner of what was once an important road link with the main routes through to Accrington, up to Kings Highway, and through to Blackburn, all passing close by via Pot House Lane and Cobbs Lane. The reservoir was built in the 1860s to supply drinking water but was phased out in the 1980s and re-developed as part of a nature reserve. [Source](#)

Take the well-maintained main footpath to the left of the lodge and walk uphill.

You will meet another main footpath on your right that goes over a bridge. Ignore this and keep to the left side of the reserve.

DISCOVER HYNDBURN → Tinker & Jackhouse Nature Reserve... Directions page 3

Now is your chance to explore attractive Pine & Beech wood, with streams and waterfalls.

You can take the higher and safer path ahead through the trees, with the stream on your left, to the top of the reserve.

Or, after a while you can drop down to the brook and go over a footbridge, take time to look at the water falling over the rocks and then make your way uphill through the trees towards the top of the reserve keeping the brook and then the boundary wall on your left.

Walking through the trees you will cross Cocker Brook.

At SD 743256 when you meet a well-maintained path you will see a stile on your left. This is where the Great Ossie Walk (GOW) and Hyndburn Clog enter Jackhouse Nature Reserve.

On a good day you should get a view of Pendle Hill from here.

Note: walkers with reduced mobility, trampers and prams can join the rest of the walk from this point.

Do not turn right and walk downhill. Walk across the main path and go straight ahead and you will reach the wildflower meadows on your left and an area which contained the third lodge.

Walk as far as Cobbs Lane where you will find more information boards.

Retrace your steps and turn left down the main path. Keep on the wider main path until you have passed the wetland area on your right and where

the paths fork then take the right-hand fork down the path to benches, the large lodge and the weirs at Cocker Brook.

Both Tinker and White Ash Brooks drain the north side of Oswaldwistle Moor. Tinker Brook originates as Jackhouse Brook at the confluence of Cocker Brook and Cocker Lumb near Jackhouse, the former having passed through the old Warmwithens and Jackhouse reservoirs.

Cross the footbridge and retrace your steps up Melbourne Street to Oswaldtwistle Library.

See five more Historic Ossie Walks

[HERE](#)

Volunteer with PROSPECTS

There are [woodland volunteering opportunities](#) at The PROSPECTS Foundation.

The PROSPECTS Foundation has received a National Lottery Heritage Fund grant of £95,100 for an exciting heritage project in Hyndburn. The project focuses on the long term management of 8 Lancashire County Council woodland sites in Hyndburn.

The project will take on the management of these woodlands to conserve their habitat and heritage value for the future. The project will involve local people, schools and volunteers in learning about, surveying and helping to protect these woodlands

If you would like to **Volunteer with PROSPECTS** visit the [website](#).

DISCOVER HYNDBURN



There is a full version of this walk with photographs and gpx route on ViewRanger. The link is via the QRCode on the front page or this

[LINK](#)



More walks are available at: - <https://prospectsfoundation.org.uk/walking/>

These will be available from ViewRanger as we add them.

Please follow the Countryside Code and leave only your footprints in the countryside.

The five points of the Countryside Code are:

- Be safe, plan ahead and follow any signs. Take maps/guidebooks. ...
- Leave gates and property as you find them ...
- Protect plants and animals and take your litter home. ...
- Keep dogs under close control. ...
- Consider other people.

We Hope You Enjoyed This Walk



The Countryside Code

Respect other people

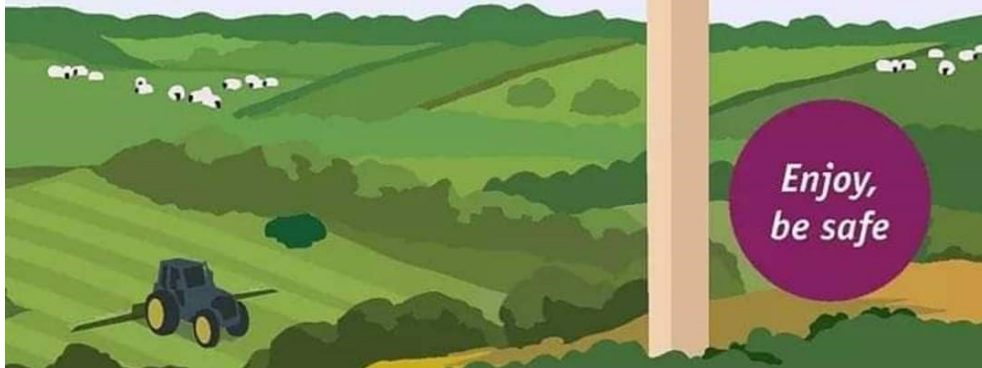
- Consider the local community and other people enjoying the outdoors
- Park carefully so access to gateways and driveways are clear
- Leave gates and property as you find them
- Follow paths but give way to others where it's narrow

Protect the natural environment

- Leave no trace of your visit, take all your litter home
- Don't have BBQs or fires
- Keep dogs under effective control
- Dog poo - bag it and bin it

Enjoy the outdoors

- Plan ahead, check what facilities are open, be prepared
- Follow advice and local signs and obey social distancing measures



The PROSPECTS Foundation is Hyndburn's community owned environmental charity and we are something of a unique and wonderful organisation. We were established by local residents as a company limited by guarantee in 1998 and became a registered charity in 1999.

Our aim is to improve people's quality of life through positive environmental action. By working with a diverse range of groups in Hyndburn we aim to inspire young people; improve health and wellbeing; support communities; improve the environment; and encourage sustainable living.

All our projects fit under one of our six themes of sustainability -

Improving Biodiversity...Improve biodiversity and wildlife habitats.

Energy conservation...Promote energy conservation and the use of renewables.

Local Food...Increase the production of locally grown food.

Raising Environmental Awareness...Raising awareness of sustainable development issues.

Sustainable Transport...Encourage greater use of sustainable transport

Waste and Recycling...Increase waste minimisation and recycling.

<https://prospectsfoundation.org.uk/>

Email: info@prospectsfoundation.org.uk

THE WINDFALL FUND...

Grants are available to community groups throughout Hyndburn for environmental projects which will improve the quality of life of local residents and contribute to the sustainable development of the Borough.

<https://prospectsfoundation.org.uk/the-windfall-fund/>

