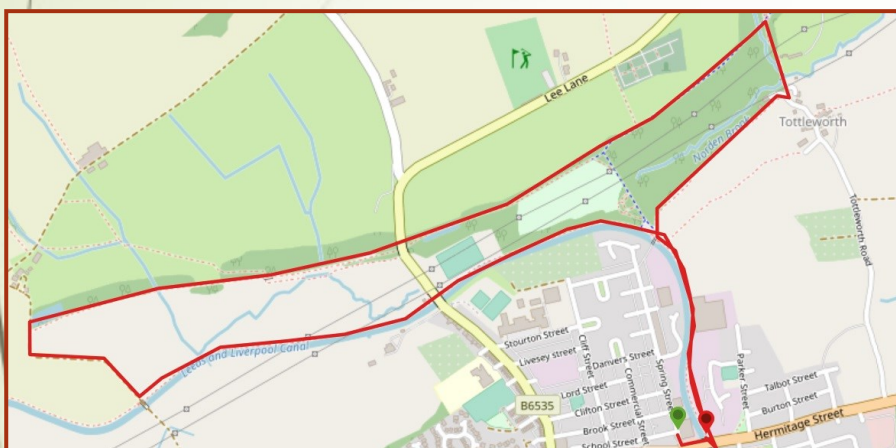


DISCOVER HYNDBURN

Rishton, Railway and Canal Stroll

A linear start and finish Rishton via the Canal Café then a circular walk to Tottleworth hamlet, the dismantled railway loop line and back via the Leeds-Liverpool canal towpath. Local history, wildlife a short introductory walk plus a linear there and back to Great Harwood if you fancy a longer walk.



Parking: Parking off Spring Street at junction with School Street and behind the library on School Street just off High Street, Rishton

Public Transport: Bus stops on High Street near The Roebuck public house. 152 Transdev Lancashire United BURNLEY - BLACKBURN - PRESTON.

Distance and Approximate Time: 3.6 miles (5.7kms), 1.5 to 2.5 hours plus 1.6 miles and 40—60 mins if you go to Great Harwood station masters house and back

Terrain: Good surface on multi-user track and canal towpath. A flight of steps and muddy track at Tottleworth and Norden bridge. Other footpaths are uneven and can be also be muddy.

Map: OS Explorer 287 West Pennine Moors 1:25 000 scale

Key to Facilities: Shops and refreshments in Rishton town centre. Toilets and refreshments at the Canal Café.

Please keep dogs on a lead and follow the Country Code

To get the full version of this map and the FREE route directions you will need ViewRanger. ViewRanger is a digital guide to the outdoors with downloadable route guides, outdoor maps, and powerful GPS navigation features. Their mobile app runs on iPhone, iPad, Apple Watch, and Android smartphones, tablets, and watches. <https://www.viewranger.com/en-gb>



For more information go to www.prospectsfoundation.org.uk For the gpx route use the QRCode on the right



DISCOVER HYNDBURN Rishton, Railway and Canal Stroll... Directions page 2

Information to help you enjoy this walk

A circular walk from Rishton via the Canal Cafe, Tottleworth, the dismantled railway loop line and back via the canal towpath.

START From the car parks walk to Hermitage Street (A679) and the Leeds-Liverpool canal at Rishton Bridge No 108A Hermitage Street and join the canal via the metal Jubilee gate.

Note: The café is accessed by going under the bridge on the canal towpath.

The [Rishton PROSPECTS Panel](#) was formed in July 1996 and currently has an active membership of 20 of varying ages and backgrounds, all keen to try to do something to improve the local environment and quality of life for the residents of Rishton in a sustainable way. The Panel installed two Jubilee gates one at the start of this walk and one at Norden Bridge.

Walk along the canal towpath (with the canal on your left) until you reach Tottleworth bridge. You can go up the steps or under the bridge, to go through the A-frame and turn right up a slope to meet the top of the steps.

Note: People with reduced mobility may wish to miss out the Tottleworth section and the steps. In which case walk forwards with the football pitch on your left until you reach the wall of the old railway bridge on your right.

To Tottleworth loop. Take the first path on your right down the rough track passing the allotments until you reach the lamp post at the bottom. You are now in Tottleworth.

Tottleworth is a small hamlet situated between Great Harwood and Rishton. It is situated close to the confluence of the Lidgett and Norden Brooks. This may have been part of an old pack-horse route.

The Tottleworth Conservation Area was designated in 1976. It is a mix of 17th to 19th century residential and agricultural buildings. Tottleworth Road, between Rishton and Great Harwood, was closed to vehicles north of the Norden Brook in 1996.

[Tottleworth Conservation Area Appraisal and History](#), Hyndburn Borough Council 2011.

It is first mentioned in a grant made early in the 13th century by Maud de Praers to Uctred son of Roger de Rishton; her gift included three-fourths of the place, the bounds going from Oakenholt syke through Tottleworth lache on the west side of Bentley, and thence by Norden Brook and Hyndburn to the starting-place. The hearth tax return of 1666 records two houses with four hearths and smaller dwellings.

Turn left and go over Norden Brook and towards the railway tunnel on the narrow Tottleworth Lane.

The brook has always been a popular place to play for local children.

Go right up the steps until you reach the track coming from Great Harwood.

Great Harwood was once on the railway line from Blackburn to Burnley via Padiham – The North Lincs or Great Harwood Loop of the Lancashire

and Yorkshire Railway. The last passenger train ran in November 1957 and goods traffic in 1964. The Martholme Viaduct on the line remains about one mile north east.

This section of your walk is known locally as the White Path and it accurately follows the straight line of the old railway skirting the outlying parts of Great Harwood.

See note about Great Harwood at the end of this walk.

Turn left and walk over the bridge along the multi-user track until you get to the railway bridge on your left.

This is the same bridge that those not going via Tottleworth will reach.

With the football pitch and the canal in the distance on your left walk ahead with the football pitch on your left. and enjoy the hedgerow and trees on your right.

This part of the walk is quite a wildlife haven and there is plenty of nature to enjoy.

You will reach Norden Bridge and it can be quite muddy at this point in the walk.

You are close to Hyndburn Academy school and as you walk under the bridge take note of its beautiful crafted structure made from locally quarried stone.

Follow the track bed on the raised embankment and you will cross a cast iron farm occupation bridge, its components cast at Thompson's Foundry in Blackburn.

DISCOVER HYNDBURN → Rishton, Railway and Canal Stroll... Directions page 3

Continue ahead until you reach a partly filled in farm occupation bridge, which has a stone span disappearing underground less than a mile from where it was quarried.

You will leave the track bed at this point up a narrow bit which used to be steps.

On your right you can see Cunliffe Farm and Cunliffe Quarries. Several spoil heaps which provided stone for all the bridges on the Great Harwood Loop Line can be seen on the hillside.

Turn left over a cattle grid. You are now on Cut Lane which is a rough track. Follow the lane until you reach Cut Lane canal bridge No 107. Leave the track via a gate and steep path/steps to join the canal towpath.

Turn left and follow the canal towpath back to the Canal Café via Norden canal bridge where you can see the other Jubilee gate. You will pass the picnic site at Tottleworth Bridge. Do not leave the canal towpath until you reach the mooring and the Canal Café.

Note about Great Harwood: You could extend the walk at the point where you joined the White path and turn right. You will pass the cemetery on your left, the Victoria pub (also known as Butcher Brig) on your right and a railway mural designed by the children of Great Harwood. Nothing remains of the railway line at Great Harwood other than the Station Master's House and two massive gateposts that guarded the entrance to the old goods yard.

This is now the site of an Aldi store.

This will extend your walk by 0.8 miles (1.35kms) in each direction which will take 20-30mins each way.

If you wish to find out more about the Lancashire & Yorkshire Railway and railway history there is an information map you can [download](#) & a [leaflet](#).

Canal Volunteers—The Rishton PROSPECTS Panel adopted this section of the canal for many years. In May 2019 PROSPECTS formed a partnership with the Canal and River Trust and since then local volunteers have carried out joint volunteer sessions at key locations on the Hyndburn section of the Leeds-Liverpool canal including Tottleworth Bridge, Rishton Bridge, Church Kirk Donkey Bank picnic area, Peel Bank swing bridge and both Whalley Road and Enfield Wharf bridges in Clayton-le-Moors.



Volunteering with Woody

Woody is a Community Interest Company (C.I.C.) that was set up by a group of local volunteers back in 2012.

They help to manage woodlands in the borough of Hyndburn and aim to educate Hyndburn residents about the importance of woodlands and provide training in woodland crafts for the community.

If you would like to **Volunteer with Woody** visit the [website](#).

DISCOVER HYNDBURN



There is a full version of this walk with photographs and gpx route on ViewRanger. The link is via the QRCode on the front page or this

[LINK](#)



[More walks are available at: -
https://prospectsfoundation.org.uk/
walking/](https://prospectsfoundation.org.uk/walking/)

These will be available from ViewRanger as we add them.

Please follow the Countryside Code and leave only your footprints in the countryside.

The five points of the Countryside Code are:

- Be safe, plan ahead and follow any signs. Take maps/guidebooks. ...
- Leave gates and property as you find them ...
- Protect plants and animals and take your litter home. ...
- Keep dogs under close control. ...
- Consider other people.

We Hope You Enjoyed This Walk



The Countryside Code

Respect other people

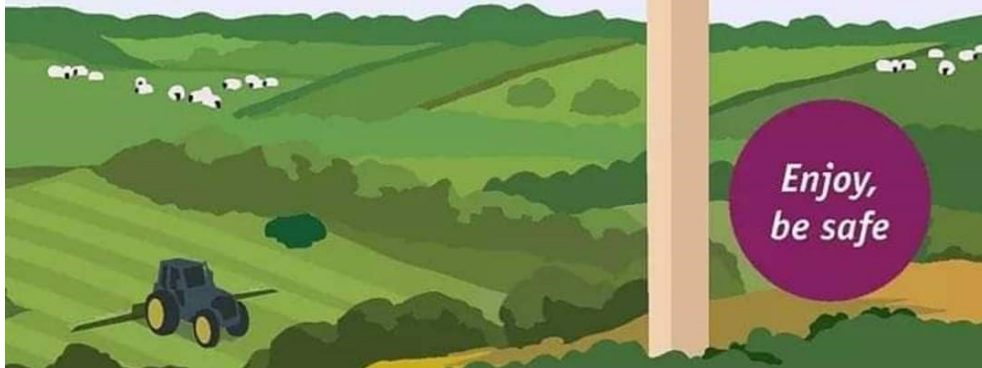
- Consider the local community and other people enjoying the outdoors
- Park carefully so access to gateways and driveways are clear
- Leave gates and property as you find them
- Follow paths but give way to others where it's narrow

Protect the natural environment

- Leave no trace of your visit, take all your litter home
- Don't have BBQs or fires
- Keep dogs under effective control
- Dog poo - bag it and bin it

Enjoy the outdoors

- Plan ahead, check what facilities are open, be prepared
- Follow advice and local signs and obey social distancing measures



The PROSPECTS Foundation is Hyndburn's community owned environmental charity and we are something of a unique and wonderful organisation. We were established by local residents as a company limited by guarantee in 1998 and became a registered charity in 1999.

Our aim is to improve people's quality of life through positive environmental action. By working with a diverse range of groups in Hyndburn we aim to inspire young people; improve health and wellbeing; support communities; improve the environment; and encourage sustainable living.

All our projects fit under one of our six themes of sustainability -

Improving Biodiversity...Improve biodiversity and wildlife habitats.

Energy conservation...Promote energy conservation and the use of renewables.

Local Food...Increase the production of locally grown food.

Raising Environmental Awareness...Raising awareness of sustainable development issues.

Sustainable Transport...Encourage greater use of sustainable transport

Waste and Recycling...Increase waste minimisation and recycling.

<https://prospectsfoundation.org.uk/>

Email: info@prospectsfoundation.org.uk

THE WINDFALL FUND...

Grants are available to community groups throughout Hyndburn for environmental projects which will improve the quality of life of local residents and contribute to the sustainable development of the Borough.

<https://prospectsfoundation.org.uk/the-windfall-fund/>

