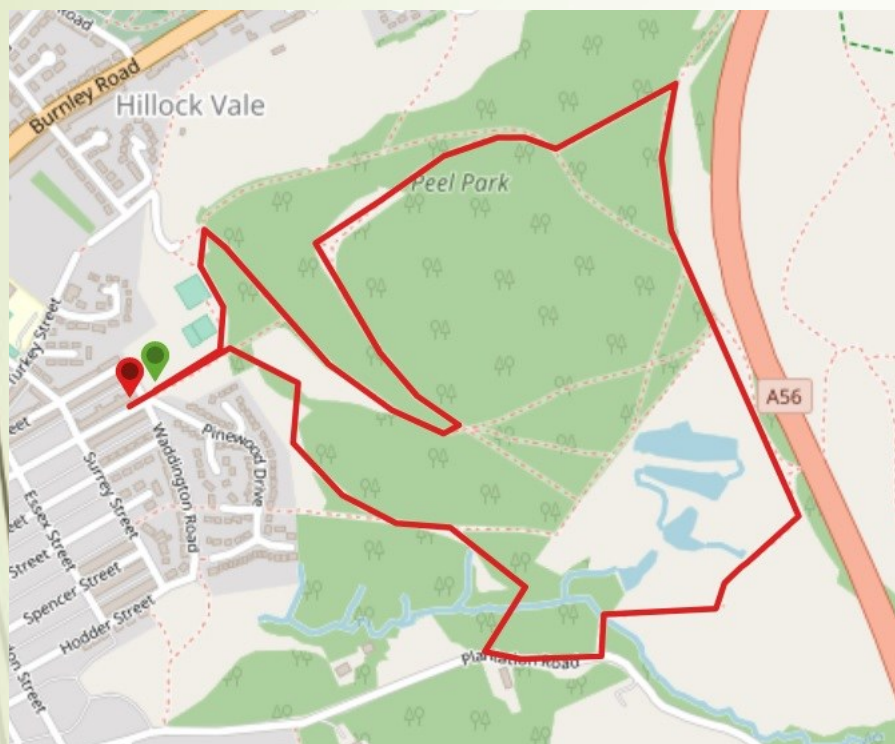


## DISCOVER HYNDBURN

# Peel Park, The Coppice and Plantation



**An introductory walk including woodland, heathland, grassland and mill lodges interwoven with an industrial legacy.**

**Parking:** Local road parking and car parking is available by the bowling green accessed from Peel Park Avenue (off Burnley Road A679)

**Bus Service:** : Use No 6 or 7 Bus and get off at the Castle Hotel, Accrington and walk (15 mins) or get M1 Mainline bus from Bradshaw Street East bus stop to Hatfield Road bus stop.

**Distance and Approximate Time:** 2.25 – 2.5 miles, 1.5 – 2 hours

**Terrain:** No stiles, well maintained woodland paths, tracks and footpaths, bridleway. Some uneven rough areas with stones. Gentle slopes

**Map:** OS Explorer 287 West Pennine Moors 1:25 000 scale

**Key to Facilities:** Accrington town centre nearby. There are no public toilets within Peel Park.

**Please keep dogs on a lead and follow the Country Code**

To get the full version of this map and the FREE route directions you will need ViewRanger. ViewRanger is a digital guide to the outdoors with downloadable route guides, outdoor maps, and powerful GPS navigation features. Their mobile app runs on iPhone, iPad, Apple Watch, and Android smartphones, tablets, and watches. <https://www.viewranger.com/en-gb>



For more information go to [www.prospectsfoundation.org.uk](http://www.prospectsfoundation.org.uk) For the gpx route use the QRCode on the right



# DISCOVER HYNDBURN → Peel Park, The Coppice and Plantation... Directions page 2

**Information to help you enjoy this introductory walk.**

*The formal area of Peel Park consists of a children's play area, multi-use games area, tennis courts, a bowling green and a car park and is located at the top of Avenue Parade with views towards Accrington.*

*The formal area is also next to the largest Local Nature Reserve in Lancashire. The reserve is accessible to most abilities despite its elevated position, due to a network of woodland paths which lead the visitor to the summit. [More information from Hyndburn Borough Council.](#)*

You can [download documents and plans](#) to help you enjoy this introductory walk.

There is a [Fun Pack](#) that families and groups can use on their visit to this and other parks in Hyndburn.

**START** at the main gate entrance at the top of Avenue Parade, Accrington. At the information boards and seat take the path to your left. Take the right-hand fork near the Bowling Green on your left.

**JOINING** from the car park near the Bowling Green turn left when you reach the path in front of you which is from the main gate entrance at Avenue parade. Turn left.

Follow the path uphill as it curves around to the right by a fence at another entrance from the car park and then turn sharp right. This is a gentler zigzag route uphill and you will see more of the park.

*You will reach your first information board about The Coppice oak and deciduous woodland.*

Continuing along this path you will see the steep path and steps leading up from Avenue Parade on your right. Stop to enjoy the views of Accrington below and

beyond.

*Your next information board is all about the flora and fauna of a deciduous woodland. Look out for carved wooden toadstools, seats in tree stumps and other things created from nature.*

At the fingerpost for Plantation Road, car park and Monument turn left and take the Monument path. The views start to open out and there is heather and gorse alongside the higher side of the path.

*You will reach the monument to William Peel and can read the plaque. Stop awhile and enjoy the views.*

*The land that today comprises Peel Park and the Coppice was acquired for recreational use by the Town Council from the Peel family who originated from Peel Fold, Oswaldtwistle and who are notable for Sir Robert Peel the Prime Minister and founder of the Police force. Mr William Peel officially opened the park on 29 September 1909. [More historic information.](#)*

Continue uphill on the slightly winding path to the trig point on your left. The trig point (triangulation point used historically for surveying) is around 254 meters above sea level.

Further along the path look to your left to enjoy the panorama. You reach a viewpoint, but the plaque has been removed and the trees now block the view. There is a waymark for the Huncoat Trail, but you turn right here and follow the path. Do not go down through the wood on your left.

Follow the path down to the right until you are walking with the bypass on your left. The ground is more uneven here. When you reach a drystone wall and

a path to your right carry on forwards across the open ground still keeping the by pass on your left.

*On this walk we do not take the righthand path down and around the perimeter of the park*

Walk along the track and you will have views down to the lodges and ponds on your right and a fence on your left.

*There are footpaths in this area that will take you down to and around the lodges but on our last visit in July 2020 the paths were overgrown, the stream was difficult to cross and the paths were quite steep and difficult in places. Only people with good mobility should explore this area.*

Walk ahead until, on your left, you reach the tunnel under the bypass.

Turn right down the wide but stony rough track. You will have more views of the lodges as you walk down this track.

At the bottom you reach a bridge on your left. Stop and take look over both sides of the bridge. Go over the bridge and turn right. You are now walking down Plantation Road.

The Plantation Mill ruins are on your right and there is an interpretation board next to the gate.

Take the path through the gate, walk slightly down hill and over the stream. It can be muddy in this area.

When you see a path ahead of you take the path to the left. *The path ahead involves steps!*

Follow this path and on the left, you will have some excellent views of Accrington.

Next take the path to your right and this leads you back into Peel Park.

# DISCOVER HYNDBURN → Peel Park, The Coppice and Plantation... Directions page 3

Next take the path to your right and this leads you back into Peel Park.

At the junction take the left-hand path and this will bring you back to the main entrance at Avenue Parade.

We hope you have enjoyed this walk.

If you would like to discover more about this area please [download](#) the EXPLORE PEEL PARK WOODNOOK BOOKLET or collect a copy from The PROSPECTS Foundation, Broadway, Accrington.

Visit Hyndburn Borough Council [website](#) for more information and videos.

***There is a series of Discover Hyndburn walks starting from different locations around the borough.***

There are more walk leaflets available from

PROSPECTS including...

- Haworth Heritage and Nature Trail
- Jackhouse Nature Reserve
- Baxenden Jubilee Walk
- Woodnook Vale Local Nature Reserve
- Accrington and Haworth Art Gallery route – *note some of the paths from the stone stile at Lower Friar Hill Cottage to Meadow Nook Farm, the footbridge over Tom Dale Clough down to the Hyndburn Greenway are indistinct, difficult to navigate and in an extremely poor condition.*

The above walks routes/leaflets can be found at <https://prospectsfoundation.org.uk/walking/>



## Volunteering with Woody

Woody is a Community Interest Company (C.I.C.) that was set up by a group of local volunteers back in 2012. They help to manage woodlands in the borough of Hyndburn and aim to educate Hyndburn residents about the importance of woodlands and provide training in woodland crafts for the community.

If you would like to **Volunteer with Woody** visit the [website](#).

## Volunteer with PROSPECTS

There are [woodland volunteering opportunities](#) at The PROSPECTS Foundation.

The PROSPECTS Foundation has received a National Lottery Heritage Fund grant of £95,100 for an exciting heritage project in Hyndburn. The project focuses on the long term management of 8 Lancashire County Council woodland sites in Hyndburn.

The project will take on the management of these woodlands to conserve their habitat and heritage value for the future. The project will involve local people, schools and volunteers in learning about, surveying and helping to protect these woodlands

If you would like to **Volunteer with PROSPECTS** visit the [website](#).

## DISCOVER HYNDBURN



There is a full version of this walk with photographs and gpx route on ViewRanger. The link is via the QRCode on the front page or this

[LINK](#)



[More walks are available at: - https://prospectsfoundation.org.uk/walking/](https://prospectsfoundation.org.uk/walking/)

These will be available from ViewRanger as we add them.

Please follow the Countryside Code and leave only your footprints in the countryside.

**The five points of the Countryside Code are:**

- Be safe, plan ahead and follow any signs. Take maps/guidebooks. ...
- Leave gates and property as you find them ...
- Protect plants and animals and take your litter home. ...
- Keep dogs under close control. ...
- Consider other people.

**We Hope You Enjoyed This Walk**





# The Countryside Code

## Respect other people

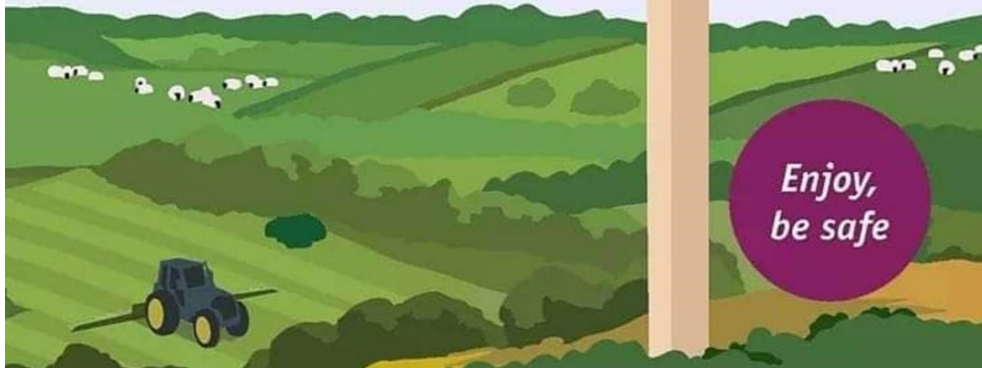
- Consider the local community and other people enjoying the outdoors
- Park carefully so access to gateways and driveways are clear
- Leave gates and property as you find them
- Follow paths but give way to others where it's narrow

## Protect the natural environment

- Leave no trace of your visit, take all your litter home
- Don't have BBQs or fires
- Keep dogs under effective control
- Dog poo - bag it and bin it

## Enjoy the outdoors

- Plan ahead, check what facilities are open, be prepared
- Follow advice and local signs and obey social distancing measures



The PROSPECTS Foundation is Hyndburn's community owned environmental charity and we are something of a unique and wonderful organisation. We were established by local residents as a company limited by guarantee in 1998 and became a registered charity in 1999.

Our aim is to improve people's quality of life through positive environmental action. By working with a diverse range of groups in Hyndburn we aim to inspire young people; improve health and wellbeing; support communities; improve the environment; and encourage sustainable living.

**All our projects fit under one of our six themes of sustainability -**

**Improving Biodiversity...**Improve biodiversity and wildlife habitats.

**Energy conservation...**Promote energy conservation and the use of renewables.

**Local Food...**Increase the production of locally grown food.

**Raising Environmental Awareness...**Raising awareness of sustainable development issues.

**Sustainable Transport...**Encourage greater use of sustainable transport

**Waste and Recycling...**Increase waste minimisation and recycling.

<https://prospectsfoundation.org.uk/>

Email: [info@prospectsfoundation.org.uk](mailto:info@prospectsfoundation.org.uk)

## THE WINDFALL FUND...

Grants are available to community groups throughout Hyndburn for environmental projects which will improve the quality of life of local residents and contribute to the sustainable development of the Borough.

<https://prospectsfoundation.org.uk/the-windfall-fund/>

