

DISCOVER HYNDBURN

Huncoat, Woodlands, Canal & Railway



A circular walk with historic features, woodlands, wildlife and butterfly meadows, the canal and a dismantled railway line. A section of Huncoat Trail and a short or longer version of the walk.

Parking: There is roadside parking near the Peace Garden on Burnley Lane off Highergate Road.

Public Transport: There is a frequent bus service from Accrington town centre and a railway station in the village.

Distance and Approximate Time: 2.8 or 4.4 miles – 1.5 or 3 hours with time to explore.

Terrain: A few stiles and steps, tracks, footpaths, & bridleways. Some uneven rough areas with stones or mud. Good towpath and paths at Spout House Woodland.

Map: OS Explorer 287 West Pennine Moors 1:25 000 scale

Key to Facilities: There are no facilities on this walk.

Please keep dogs on a lead and follow the Country Code

To get the full version of this map and the FREE route directions you will need ViewRanger. ViewRanger is a digital guide to the outdoors with downloadable route guides, outdoor maps, and powerful GPS navigation features. Their mobile app runs on iPhone, iPad, Apple Watch, and Android smartphones, tablets, and watches. <https://www.viewranger.com/en-gb>



For more information go to www.prospectsfoundation.org.uk For the gpx route use the QRCode on the right



DISCOVER HYNDBURN → Huncoat, Woodlands, Canal & Railway... Directions page 2

Information to help you enjoy this walk

The text for this leaflet is taken from a website developed by the late Roy Chetham. <https://www.roychetham.co.uk/huncoattrail.html> You will be walking part of the Huncoat Trail until you reach the motorway bridge or Cross Clough Bank Bridge on the canal.

The basic walk is 2.8 miles but can be extended to 4.4 miles if you wish to enjoy a stretch of the Leeds-Liverpool canal.

Huncoat is 1 mile east of Accrington on the A679 towards Burnley (near Junction 8 on the M65). Turn into the village at the Griffins Head pub.

Huncoat is a small village near Accrington situated on the slopes of the Pennine hills below the 1,340 feet high Great Hameldon.

START - There is roadside parking near the Peace Garden on Burnley Lane off Highergate Road.

From the Peace garden go round the front of the house called Bank Terrace. At the iron railings turn left up a curving grassy path into the recreation ground and climb the bank to the War Memorial erected in 1922.

From here there is a panoramic view of the surrounding area which includes Hameldon Scouts, The Coppice, Darwen Tower, Great Harwood, the Hodder Valley, the Bowland Fells, Pendle and Boulsworth Hill.

From the Memorial bear left and walk down the slope towards a gap in the nearest buildings where a track leads into Burnley Lane.

Turn left and cross over before the road end to

reach the Peace Garden on the corner with Lowergate.

Look at the date stone, the memorial plaques and the interpretation board.

Turn left and cross Lowergate Road to the stocks passing by Hill House, the oldest surviving building in the area, with a cluster of rustic home-steads behind.

The stocks date from 1722 and are close to the original centre of the village, which was a cross-roads called Towngate. Note the stocks and Trail information plaques within the railed enclosure.

At the stocks take the gravel drive by the end of Pipers Row to pass in front of Higher Hill House Farm and straight along the enclosed lane. *On the left is an open view over Spout House Woodland and Within Grove.*

Turn right and follow the path down the back of the houses. Walk downhill until you come to a path on your right. Take this path onto Lynwood Road. Walk down the road with the school on your right until you meet the roundabout and Enfield Close by the railway station.

Turn left.

Note: (Off Enfield Close is Yorkshire Street an alternative starting point for the walk with more parking space).

Cross over the railway at the signal box and level crossing and turn right through a gateway into the old pit top nature reserve.

[History of Huncoat Railway Station](#) by Community Rail Lancashire.

This was the site of Huncoat Colliery founded in 1885 and closed in 1968. The shafts here were sunk to the Upper and Lower Mountain Mines by George Hargreaves & Co. between 1890 and 1893. Huncoat closed on February 9th, 1968 because its workable reserves were exhausted.

[Mining History](#)

Bear slightly left initially on the main path into Clough Brook (a deep wooded clough) woodland which leads to three flights of steps winding down into the bottom of the clough and a footbridge over Clough Brook.

Cross the footbridge and go up the slope opposite. You will pass near to the RSPCA Sanctuary over on your left.

Bear right across fields aiming for the distant motorway footbridge.

Longer Route - Go over the footbridge (constructed with the motorway in 1983) and keep to the right-hand side of the field before turning left at a ruined wall leading down to the canal bridge.

Cross Clough Bank Bridge and turn left on to the canal towpath until you reach Fosters Swing Bridge at Moor Side Farm.

Cross over the swing bridge and turn left.

Walk alongside the canal around the first right hand curve.

There are footpaths but no towpath on this side of the canal. It can be muddy and there are sheep so please keep your dog on a lead. There are several gates.

DISCOVER HYNDBURN → Huncoat, Woodlands, Canal & Railway... Directions page 3

When you reach the left hand curve take the footpath across the field towards the motorway bridge.

Cross back over the motorway bridge.

Shorter Route – Turn left if you are not going over the motorway bridge to the canal. Turn right if you have just returned from the canal section of the walk.

With the motorway on your right cross the field and when you reach the broken stile go up the slight banking on to the old dismantled railway line.

Turn immediately left and follow the tree-lined dismantled railway until you reach the left-hand bend and after a short stretch you leave the public footpath by the boulders at Enfield Close which is **a very busy road so please take care.**

Cross the road, turn left, and walk along the grass verge and then the pavement. You will pass the entrance to Clough Wood near to the RSPCA Sanctuary over on your left. Ignore this entrance but take the next entrance into the wood via the metal gate and follow the path back to the same entrance that you entered the colliery site.

Cross over the railway crossing and take the road immediately right with the houses on your left. After a short way you meet Bluebell Way and a tarmac path (ginnel) between the houses.

Turn left when you see the fingerpost sign for Spout House Wood.

Go through the gate and then take the main path back up to the back of the houses and retrace your steps to the stocks at Highergate.

Huncoat Colliery is one of the best places in Hyndburn to see butterflies, wildflowers and other wildlife. Since the Colliery stopped operating in the 1960s, the land has been reclaimed by nature and is a haven for plants and wildlife. see [Hyndburn Butterfly Project](#).

Huncoat Trail - On another visit to this area you could follow more of the Huncoat Trail from Cross Clough Bank Bridge by turning right and following [the directions](#) via The Leeds Liverpool Canal, Shuttleworth House (small hall and farm) and Castle Clough Wood (deep wooded gorge).

When you reach the tarmac road then turn right along this road and it is ½ mile back to the stocks and the Peace Garden.

The PROSPECTS Foundation has not checked or measured this alternative route back to Huncoat.

HUNCOAT

There are more Huncoat Walks at <https://prospectsfoundation.org.uk/walking/>

The following website contains a lot of history and information about Huncoat <https://www.roychetham.co.uk/index.html>

Roy Chetham was a local weatherman for the Accrington Observer and Chairman of Huncoat Community Forum. He played an active role in local environmental projects through PROSPECTS. He was a keen walker and walk leader. The website is a Gateway to information on several subjects relating to his interests. In the Spring of 2019, at the age of 71, Roy passed away peacefully following a long illness.

DISCOVER HYNDBURN



There is a full version of this walk with photographs and gpx route on ViewRanger. The link is via the QRCode on the front page or this

[LINK](#)



More walks are available at: - <https://prospectsfoundation.org.uk/walking/>

These will be available from ViewRanger as we add them.

Please follow the Countryside Code and leave only your footprints in the countryside.

The five points of the Countryside Code are:

- Be safe, plan ahead and follow any signs. Take maps/guidebooks. ...
- Leave gates and property as you find them ...
- Protect plants and animals and take your litter home. ...
- Keep dogs under close control. ...
- Consider other people.

We Hope You Enjoyed This Walk



The Countryside Code

Respect other people

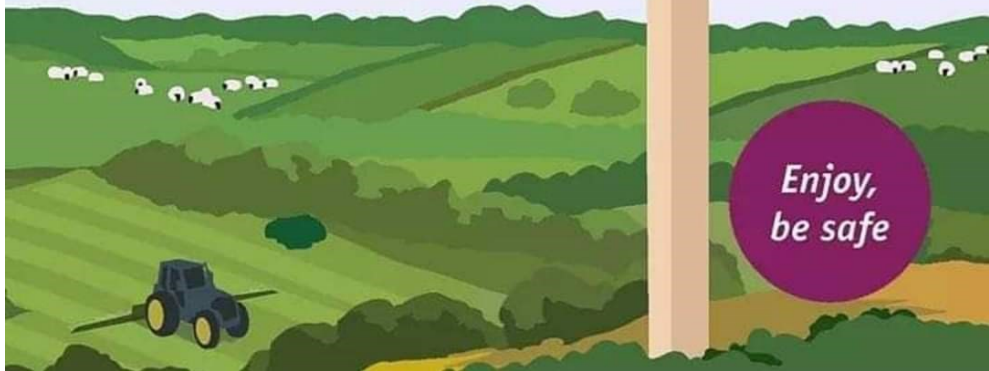
- Consider the local community and other people enjoying the outdoors
- Park carefully so access to gateways and driveways are clear
- Leave gates and property as you find them
- Follow paths but give way to others where it's narrow

Protect the natural environment

- Leave no trace of your visit, take all your litter home
- Don't have BBQs or fires
- Keep dogs under effective control
- Dog poo - bag it and bin it

Enjoy the outdoors

- Plan ahead, check what facilities are open, be prepared
- Follow advice and local signs and obey social distancing measures



The PROSPECTS Foundation is Hyndburn's community owned environmental charity and we are something of a unique and wonderful organisation. We were established by local residents as a company limited by guarantee in 1998 and became a registered charity in 1999.

Our aim is to improve people's quality of life through positive environmental action. By working with a diverse range of groups in Hyndburn we aim to inspire young people; improve health and wellbeing; support communities; improve the environment; and encourage sustainable living.

All our projects fit under one of our six themes of sustainability -

Improving Biodiversity...Improve biodiversity and wildlife habitats.

Energy conservation...Promote energy conservation and the use of renewables.

Local Food...Increase the production of locally grown food.

Raising Environmental Awareness...Raising awareness of sustainable development issues.

Sustainable Transport...Encourage greater use of sustainable transport

Waste and Recycling...Increase waste minimisation and recycling.

<https://prospectsfoundation.org.uk/>

Email: info@prospectsfoundation.org.uk

THE WINDFALL FUND...

Grants are available to community groups throughout Hyndburn for environmental projects which will improve the quality of life of local residents and contribute to the sustainable development of the Borough.

<https://prospectsfoundation.org.uk/the-windfall-fund/>

