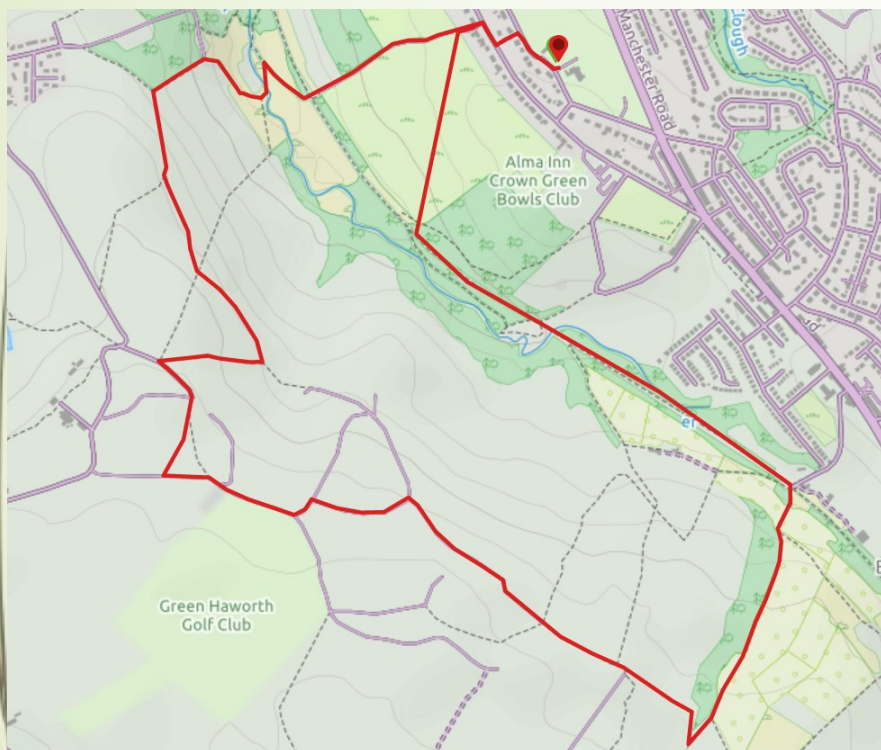


DISCOVER HYNDBURN

Tiffany, Bedlam and a Jubilee



A circular walk from the Haworth Art Gallery. Make time at the start or end of your walk to view the Tiffany Glass collection but check times of opening. The walk includes ancient paths and ruins, woodlands, fields and the NCN6 Hyndburn Greenway through Woodnook Vale. It is a hidden gem of a walk close to Accrington town centre. Lovely panoramic landscape and architecture can be enjoyed.

Parking: Local road parking and at Haworth Art Gallery car park

Bus Service: : X41 stops at Haworth Avenue, Baxenden near Haworth Art Gallery

Distance and Approximate Time: 3.5 – 4 miles, 2 – 2.5 hours

Terrain: Some stiles, well maintained woodland paths, tracks and footpaths, bridleway, multiuse Greenway and roads. Some uneven rough areas with stones. Gentle slopes

Map: OS Explorer 287 West Pennine Moors 1:25 000 scale

Key to Facilities: Haworth Art Gallery and a farm on route at Green Haworth. Dog friendly.

Please keep dogs on a lead and follow the Country Code.

To get the full version of this map and the FREE route directions you will need ViewRanger. ViewRanger is a digital guide to the outdoors with downloadable route guides, outdoor maps, and powerful GPS navigation features. Their mobile app runs on iPhone, iPad, Apple Watch, and Android smartphones, tablets, and watches. <https://www.viewranger.com/en-gb>



For more information go to www.prospectsfoundation.org.uk For the gpx route use the QRCode on the right



DISCOVER HYNDBURN → Tiffany, Bedlam and a Jubilee... Directions page 2

Important Information.

Note1: Dogs must be kept on a lead through farmland and it is recommended that dogs are kept on a short lead on bridleways and the multiuser NCN6 Hyndburn Greenway.

Note 2: We have shortened this route from our guided led walk route as some paths can be overgrown, boggy and navigation can be difficult in places.

SD766272 The walk starts at Haworth Art Gallery in Baxenden.

Haworth Art Gallery is an Edwardian Tudor-style mansion house, set in nine acres of its own parkland, complete with mature woodland and a rose garden. The house was built for brother and sister William and Anne Haworth in 1909, and it was originally called Hollins Hill. The family had made their fortune through the weaving trade.

The house, along with a collection of paintings and antiques and a sum of money for the building's upkeep, were bequeathed to the people of Accrington.

The stunning mansion is the perfect setting for the internationally renowned collection of Tiffany Glass, reputed to be the largest public collection outside of the USA.

The Tiffany collection is on permanent display and consists of over 140 items including glass tiles, vases and mosaics. There is also an excellent collection of 19th Century oil paintings.

Leave Haworth Park via the car park entrance and turn right. Walk alongside the houses until you reach a path between the houses on your left near some red and gold topped pavement bollards.

At the end of the path cross over the road and turn right. After 45 metres (50 yards) turn left down the broad waymarked track.

This is a stony uneven track with a hedgerow on your left and playing fields on your right.

Passing a wooden finger post keep on this track until you reach a gate and stone bridge over the Hyndburn Greenway.

Go through the gap to the left of the gate but do not go down the steps. Walk ahead and follow the track around to your right.

You will see a large metal gate with a No Entry sign. Take the narrow path to the right of the gate.

This path is narrow, and the hedgerow is overgrown in places. It is uneven and can be muddy in places after wet weather.

Go over the wooden stile and take the path down to your left over a metal bridge. Follow the path up a slight incline until you reach a gravel path on your left near a broken finger post.

Follow the path uphill past seating and do not turn off this path until you reach the T junction and then turn left.

You will reach a barrier and a gap leading to an open area. Go through the gap and carry on ahead. Do not take the wide track on your right.

The path takes you to Accrington Riding Centre. At the riding centre gate turn right along the path and through the wide metal gate.

You will often meet horses on this part of the walk.

Partway up the path you will see some steps and a wooden gate on your right.

Option A - At his point you can turn right and enter the Rothwell Heights wooded area via the gate and turn immediately left up hill on the narrow path.

You can take time to explore Rothwell Heights, but you need to return to this point to continue on this walk.

You will arrive at a bench and gate on your left.

Option B – Continue ahead up the path, ignoring the steps and gate on your right.

You will arrive at a bench and gate on your right.

To continue... Take time to enjoy the views at this point on the walk.

There are two metal gates in front of you. Take the right-hand gate and go through the narrow gap on the left of the gate.

Take the path uphill with a drystone wall on your right. This is a stony track which becomes a grassy track. Do not take the metal fence on your right by the broken stile.

Continue ahead, stopping occasionally to enjoy the views back down into Accrington and towards Baxenden. Follow this grassed track until you reach a metal gate.

Go through the gate towards the derelict farm buildings in front of you. Keep the farm ruins on your left and then take the stile on your left.

Do not turn right over the stile adjacent to the drystone wall.

Your way forward is the narrow path between two pole and barbed wire fences. At the stile you may be able to go through the gap on the right but otherwise use the stile.

DISCOVER HYNDBURN → Tiffany, Bedlam and a Jubilee... Directions page 3

In front to you is a converted building with a gap in fences and where you turn right to continue between the fences. This path widens out onto the access track.

In a short while you will reach the Green Haworth area and Bedlam cottages.

*Part of Green Haworth village is known as **Bedlam** and was recorded by the monks of Kirkstall when defining their boundaries in the 12th century.*

***Bedlam** is derived from the name Bethlehem, and **Bedlam** became a generic name for places where 'lunatics' were cared for.*

Just before the cottages turn to your left and take the signposted public footpath to Biggins Farm.

At the farm gate take the gap on the right of the gate and walk through the car park.

At the gate with the Biggins Farm post box cross over a stone stile between the gate and the drystone wall and immediately over the wooden stile. This is well signposted with waymark arrows.

Walk ahead across the field towards Spring Vale Farm and the Adventure Neighbourhood where there is horse agility for all!

As you reach the rear of the farm buildings and the courtyard on your left you will see a brown door set back on your left.

The sign says 'Loo and Brew – Please help yourself to tea, coffee etc.'

Leave the farm and when you meet the road you will see the Energie Kontor Windfarm ahead of you.

See Windfall Fund at the end of this leaflet.

Turn left on to the bridleway towards Green Haworth Golf Club. Continue along the bridleway until you reach the concrete wall and steps on your right and small buildings on your left.

See Option C if you have done this walk before

*Turn left off the bridleway onto the footpath and follow this around to your right. Ignoring all the other footpaths walk ahead until you reach Victoria Cottage.

Then walk ahead around the right-hand bend until you reach a series of stables, farm cottages and a barn at Higher Friar Hill.

Continue ahead between all the buildings and at the bend by the converted barn continue around to your left through the gate stoops.

Option C re-joins this walk

**In front of the gateway to Lower Friar Hill Cottage you will arrive at a point where a bridleway and several footpaths meet. There is a red post box built into the right-hand side stone pillar.

Turn left down the bridleway through the gate. This is quite steep, and the way ahead is narrow with an uneven terrain. It is muddy in places.

Follow the bridleway down to the right and then turn left. Do not go over any stiles.

You will see Baxenden and the church spire in the valley below.

At the junction by the lamppost turn right and at the left-hand bend ignore the metal gate and the greenway track to your right.

By the blue finger post take the Hyndburn Greenway multiuser track, NCN 6, towards Accrington. This is an exceptionally smooth track.

There are some interesting features along the Greenway and some seats where you can rest awhile.

Follow the Greenway through Woodnook Vale for half a mile.

On route you descend to the site of the Five Arches bridge on the old railway line and continue over the new bridge with Woodnook Water crossing under the bridge.

The old bridge was demolished in 1981 and the new bridge you walk over was constructed in 1992 as part of the Woodnook Nature Reserve project.

There is a finger post, an information post about PROSPECTS and an information board relating to wildlife, history, the Shoe Mill Baxenden Signal Box operated from 1875 to 1962.

[More information about Shoe Mill industrial site and the surrounding area](#) and a [map](#) of the area.

On your right but hidden in the trees pass the site of the Accrington Corporation Smallpox Hospital.

After half a mile on the Greenway you reach a large open field on your right with a wooden footbridge and a gate.

Pass through the gate and bear left to follow the path uphill between the newly planted wood.

Look across the valley on your left and you can see the farm ruins you passed earlier on this walk.

DISCOVER HYNDBURN → Tiffany, Bedlam and a Jubilee... Directions page 4

As you cross Hollins Wood there is an information board about North Lancs Training Group on your left.

On your right is a commemoration stone for Lancashire Jubilee Woodlands 2012 on your right.

In 2012, new woodlands were established in honour of The Queen's Diamond Jubilee.

Woodlands from Waste was an existing scheme to plant 2.5 million trees in Lancashire over the 25-year life of the current contract to process people's household waste.

The woods provide access to allow people to enjoy them and they are an asset to the local community for outdoor recreation.

A seven-hectare site at Hollins Technology College, known as Hollins Wood, was planted and about one kilometre of new paths was introduced for the enjoyment of the public.

Continue ahead until you reach a gate and emerge onto the hard track.

From here turn right and retrace the route back to the Howarth Art Gallery car park.

Don't forget to spend time at Haworth Art Gallery, in the park and at the Gallery Kitchen.

More information about opening times etc - <https://www.hyndburnbc.gov.uk/haworthaccrington/>

Option C

If you have enjoyed this walk before continue ahead on the bridleway alongside the concrete reservoir wall and steps towards Meadow Top Farm.

Turn left down the bridleway, then follow it round to the right where it meets two footpaths.

Continue down the bridleway to the gate which brings you out **in front of the gateway to Lower Friar Hill Cottage. **Re-join the main walk.**



Volunteering with Woody

Woody is a Community Interest Company (C.I.C.) that was set up by a group of local volunteers back in 2012. They help to manage woodlands in the borough of Hyndburn and aim to educate Hyndburn residents about the importance of woodlands and provide training in woodland crafts for the community.

If you would like to **Volunteer with Woody** visit the [website](#).

There are woodland [volunteering opportunities](#) at The PROSPECTS Foundation

Additional Walks

There are more walks in the area.

- Haworth Heritage and Nature Trail
- Explore Peel Park and Woodnook Vale
- Baxenden Jubilee Walk
- Woodnook Vale Local Nature Reserve
- Accrington and Haworth Art Gallery route – *note some of the paths from the stone stile at Lower Friar Hill Cottage to Meadow Nook Farm, the footbridge over Tom Dale Clough down to the Hyndburn Greenway are indistinct, difficult to navigate and in an extremely poor condition.*

The above walks routes/leaflets can be found at <https://prospectsfoundation.org.uk/walking/>

DISCOVER HYNDBURN



There is a full version of this walk with photographs and gpx route on ViewRanger. The link is via the QRCode on the front page or this

[LINK](#)



More walks are available at: - <https://prospectsfoundation.org.uk/walking/>

These will be available from ViewRanger as we add them.

Please follow the Countryside Code and leave only your footprints in the countryside.

The five points of the Countryside Code are:

- Be safe, plan ahead and follow any signs. Take maps/guidebooks. ...
- Leave gates and property as you find them ...
- Protect plants and animals and take your litter home. ...
- Keep dogs under close control. ...
- Consider other people.

We Hope You Enjoyed This Walk



The Countryside Code

Respect other people

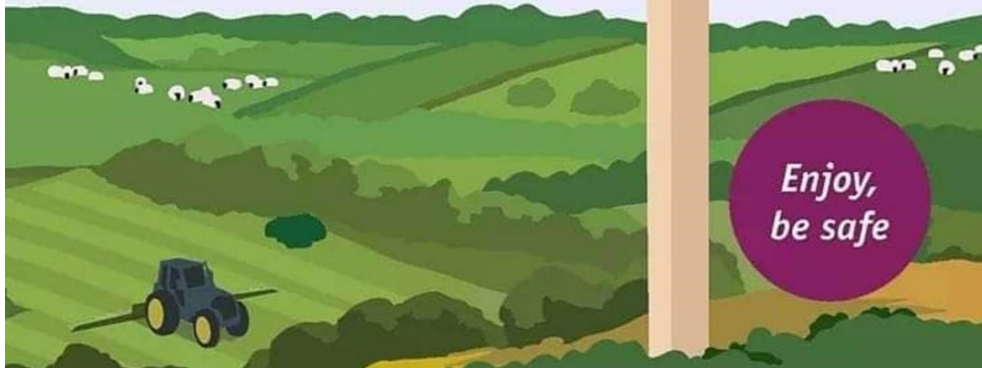
- Consider the local community and other people enjoying the outdoors
- Park carefully so access to gateways and driveways are clear
- Leave gates and property as you find them
- Follow paths but give way to others where it's narrow

Protect the natural environment

- Leave no trace of your visit, take all your litter home
- Don't have BBQs or fires
- Keep dogs under effective control
- Dog poo - bag it and bin it

Enjoy the outdoors

- Plan ahead, check what facilities are open, be prepared
- Follow advice and local signs and obey social distancing measures



The PROSPECTS Foundation is Hyndburn's community owned environmental charity and we are something of a unique and wonderful organisation. We were established by local residents as a company limited by guarantee in 1998 and became a registered charity in 1999.

Our aim is to improve people's quality of life through positive environmental action. By working with a diverse range of groups in Hyndburn we aim to inspire young people; improve health and wellbeing; support communities; improve the environment; and encourage sustainable living.

All our projects fit under one of our six themes of sustainability -

Improving Biodiversity...Improve biodiversity and wildlife habitats.

Energy conservation...Promote energy conservation and the use of renewables.

Local Food...Increase the production of locally grown food.

Raising Environmental Awareness...Raising awareness of sustainable development issues.

Sustainable Transport...Encourage greater use of sustainable transport

Waste and Recycling...Increase waste minimisation and recycling.

<https://prospectsfoundation.org.uk/>

Email: info@prospectsfoundation.org.uk

THE WINDFALL FUND...

Grants are available to community groups throughout Hyndburn for environmental projects which will improve the quality of life of local residents and contribute to the sustainable development of the Borough.

<https://prospectsfoundation.org.uk/the-windfall-fund/>

