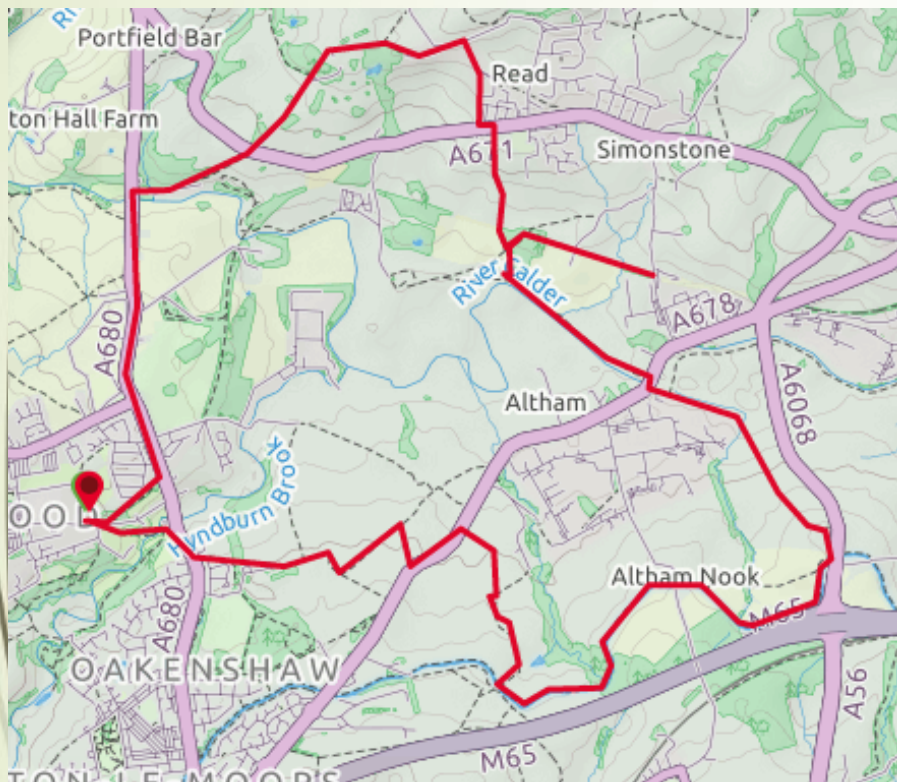


DISCOVER HYNDBURN

Hyndburn Way, Gooseleach and Canal Clog



A circular walk from Great Harwood based on a section of the 1989 Hyndburn Way written and produced by Hyndburn Borough Council, part of Stage 5 of the Hyndburn Clog and a section of towpath on the Canal Clog developed by Hyndburn Ramblers. The walk includes footpaths, local history, Cock Bridge, Read Hall, Gooseleach Wood concessionary path with railway history, Altham Water Cornmill, Shuttleworth Hall, Clayton Hall and the rivers Calder and Hyndburn.

Parking: Local road parking at Heys Lane/Hyndburn Road opposite Alan Ramsbottom Way

Bus Service: Nos 6/7 Tesco, Queen Street, Great Harwood

Distance and Approximate Time: 8 – 10 miles, 3 to 5 hours including 'Options A'

Terrain: Quite a few stiles. Roads, tracks, bridleway and footpaths. One road walking section on Whalley Road Great Harwood near the start. Gentle slopes and farmland

Map: OS Explorer 287 West Pennine Moors 1:25 000 scale

Key Facilities: The Walton Arms at Altham may be open

Please keep dogs on a lead and follow the Country Code

To get the full version of this map and the FREE route directions you will need ViewRanger. ViewRanger is a digital guide to the outdoors with downloadable route guides, outdoor maps, and powerful GPS navigation features. Their mobile app runs on iPhone, iPad, Apple Watch, and Android smartphones, tablets, and watches. <https://www.viewranger.com/en-gb>



For more information go to www.prospectsfoundation.org.uk For the gpx route use the QRCode on the right



DISCOVER HYNDBURN → Hyndburn Way, Gooseleach and Canal Clog... Page2

The original Hyndburn Way (1989) walked in a clockwise direction from Cock Bridge to Altham Bridge then Shuttleworth Hall and we follow this route. The Hyndburn Way (2000) Stage 5 is in an anti-clockwise direction. This walk starts where Heys Lane meets Hyndburn Road opposite Alan Ramsbottom Way near Wood Street bus stop in Great Harwood. There is a small parking area.

With the bus stop on your right walk down Hyndburn Road and take the entrance into a small woodland on your left opposite Alan Ramsbottom Way. Follow the footpath to the end and take the steps on your left. Do not go through the gate on to Whalley Road to avoid walking on the main road.

Keeping the houses on your left and the grassed area on your right walk straight ahead until you meet Harwood Lane and can see the large Great Harwood stone entrance marker on your right. Cross Whalley Road at the pedestrian refuge crossing and turn left to walk past golf club entrance and the garage.

Keep on the A680 past Checco's and The Game Cock down to the Cock Bridge. It is here you join the Hyndburn Way.

It was known that in 1697, Lawrence Walmsley was the Inn Keeper of the Game Cock Inn. In 1632 a petition was sent to the Justice of the Peace at Preston which requested a stone bridge across the Calder. The request was granted and since then several bridges have been built. The bridge was made higher in 1921.

SD745341 Turn right onto Old Coal Staithe with Cock Wood on your left. At the garden centre take the track on your left up to the main road A671. Cross the main road and enter the main drive via the Gate House.

Follow this track keeping to the left until you can see Read Hall (SD757349) on your right. Follow the 'private road public footpath' past stone cottages (Coppy Barn and The Stables), along the stone wall and then the new built houses.

Keep straight ahead and at the end of Hammond Drive a lane will join from the left. Keeping the cottages on your right walk ahead on Whins Lane until you meet George Lane and turn right down the hill. When you meet the A671 in Read turn left and after 50 metres you will see a public footpath sign at the corner of the kitchen showroom. Cross the road.

Follow the public footpath down the side of the kitchen showroom passing through a new gate and an older gate. At the end of a red brick building you reach open farmland. Walk ahead to a stile and gate and stop to enjoy the views. You can see the old railway line below you,

On your left is a line of trees. Follow the footpath down to the gate. This may be partly hidden by the hedgerow in summer. Go through the gate and turn right.

Follow the hedgerow, now on your right, down to the cattle creep. Do not go up on to the old railway line. This is private land.

Go over the stile and when you reach the end of the stone wall veer to your left and follow the fence line down the side of Gooseleach Wood on your left.

SD766338. At the end of the fence on your left there is a stile into Gooseleach Wood where the footpaths meet.

Option A. Go over the stile into the wood and follow the path to a stile leading to a cattle creep tun-

nel under the old railway line. Stop to look at the stonework.

When emerging at the end of the tunnel you will see a gap in the stone wall on your right. This leads up to a concessionary path. It is private land but WWW.RAILWAYPATHS.ORG.UK give permission for this to be used for recreational purposes. You are now on the old railway line.

The Lancashire and Yorkshire railway through Great Harwood to Padiham and Rosegrove was completed in 1877. [More Information.](#)

Lunch/Break. There are benches and picnic tables near the start of the concessionary track bed.

You can then walk along the concessionary path to Simonstone Lane and read the Martholme Greenway information board.

Martholme Greenway is a community group who's aim is to link Great Harwood with the Padiham Greenway along the old East Lancashire loop line track bed. The metal bridges were built by Blackburn College students.

You will need to return to the cattle creep and the stile you used to enter Gooseleach Wood. The distance there and back is one mile.

To continue... SD766338. At the stile follow the hedgerow/fence around to your left in a loop. You will meet a boardwalk on your left. Care must be taken here as some of the wood is rotting and there are gaps.

There are small stiles, muddy sections and stepping stones along the board walk.

At the end of the wildlife area walk forwards, turn left and follow the River Calder (on your right) through a

DISCOVER HYNDBURN → Hyndburn Way, Gooseleach and Canal Clog... Page3

stile and over a footbridge until you reach the steps leading up to the main road at Altham Bridge.

Altham Bridge superseded the ancient Calder Ford where worshippers bound for the Parish Church at Whalley assembled to cross the river. A church was built in the days of St Stephen to save the journey to Whalley.

Turn right over the bridge and then left to walk towards Altham Water Corn Mill with River Bank Terrace on your right.

The corn mill was erected in 1816 by E Topham, there can be little doubt that this was the site of Robert Peel's Spinning Mill which was twice destroyed by distressed hand spinners and weavers in 1768 and 1779. The attractive stone chimney with two collars and low crown indicates dual power, water and steam. Small engines at this time were often installed as a stand-by in the event of drought and frost. In its long life the mill has been put to various industrial uses.

Now follow Shotten Brook on your left. After two gates/stiles take the waymarked path on your left. After one stile and at the end of the trees veer right up the slope towards the industrial unit. Do not go over any more stiles as you will reach a locked gate. Go forward until you reach the footbridge and over this is a gentle path that takes you up towards the canal.

SD779326 Follow the footpath up to the track and after passing Kingfisher Angling Club and farm buildings you reach Shuttleworth Hall.

Shuttleworth Hall is a fine example of a 17th century hall, now used as a farmhouse. It stands on high ground and is an H-shaped building of two storeys and attic with mullioned and transomed windows and stone slated roof.

SD784322 You will soon join the [Burnley Way](#) near the timber yard. Do not follow the track to the left and to the dual carriageway. [Burnley Way Leaflet](#).

Go through the gate ahead to reach Bridge 119 on the Leeds-Liverpool canal. Here you leave the Hyndburn Way and Hyndburn Clog and join the Hyndburn Canal Clog. Descend to the towpath turn right and walk with the canal on your left.

Pass under Altham Lane Bridge No 118 and follow the towpath via Clough Bank Bridge No 117, until you reach the derelict building and the broken Smiths Swing Bridge No 116. Now leave the Canal Clog and go through the gate on your right.

Walk forward down the field until you can see a small lodge ahead and a gap in a drystone wall. Do not go through the gap, turn left and walk along the drystone wall to a stile with some large upright stones.

Cross the field and you will see a stile in open space under the line of telegraph wires. Do not walk towards the farm. Turn left at this stile and go over the stile at the side of the gate. Go over a second stile and follow the footpath around to where it meets Burnley Road (A678) with the building on your right.

SD764323 Go over the stile, cross the road, and turn left to pass The Beeches bus stop.

SD761320 Follow the main road and SD 761320 turn right at the track to the detached house. Turn left in front of the building and walk up the footpath to the track. Then turn right and follow the track around at Red House Farm and through the gate/stile.

Walk straight ahead (do not take the track to your right) until your way is blocked by a large metal gate at Clayton Hall, Clayton Hall Drive.

There have been three Clayton Halls. The Grimshaw family built the "first" hall in in the 1300s. The "second" Clayton Hall was built in about 1772 after the Lomaxes took over from the Grimshaws and was demolished in 1977. The current Clayton Hall is the third structure to be built at the location. [Clayton Hall](#).

SD 763321 Turn right over the stile and follow the path around to the left, past the back of houses, over a stile and down to Whalley Road keeping houses to your left. You will see way-markers for the Hyndburn Lady-bird Trail

Cross Whalley Road (A680) and take the steps and path through to Holme Road. Cross the road and go across the red metal bridge over the Hyndburn.

Follow the footpath uphill and you will emerge on to Hyndburn Road. The start of your walk is on your left on the opposite side of Hyndburn Road.



There is a full version of this walk with photographs and gpx route on ViewRanger. The link is via the QRCode on the front page or <https://tinyurl.com/y9s58fyu>



[More walks are available at: - https://prospectsfoundation.org.uk/walking/](https://prospectsfoundation.org.uk/walking/)

These will be available from ViewRanger as we add them.

Please follow the Countryside Code. Leave nothing but footprints, take nothing but photographs and kill nothing but time!



The Countryside Code

Respect other people

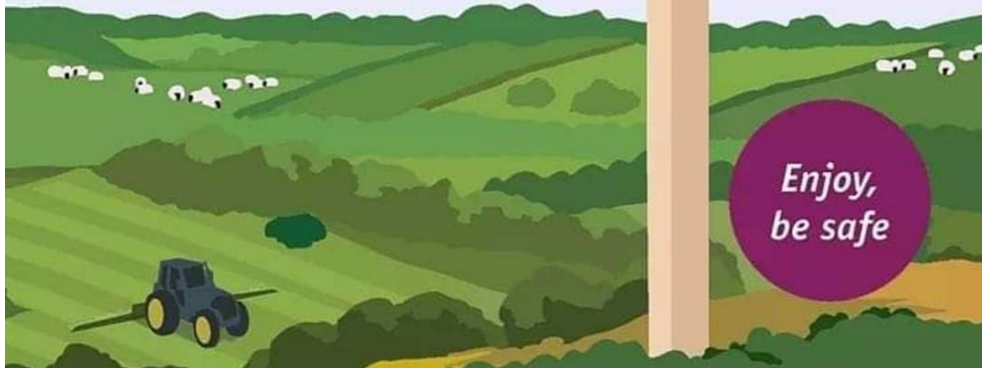
- Consider the local community and other people enjoying the outdoors
- Park carefully so access to gateways and driveways are clear
- Leave gates and property as you find them
- Follow paths but give way to others where it's narrow

Protect the natural environment

- Leave no trace of your visit, take all your litter home
- Don't have BBQs or fires
- Keep dogs under effective control
- Dog poo - bag it and bin it

Enjoy the outdoors

- Plan ahead, check what facilities are open, be prepared
- Follow advice and local signs and obey social distancing measures



Welcome to PROSPECTS

The PROSPECTS Foundation is Hyndburn's community owned environmental charity and we are something of a unique and wonderful organisation. We were established by local residents as a company limited by guarantee in 1998 and became a registered charity in 1999.

Our aim is to improve people's quality of life through positive environmental action. By working with a diverse range of groups in Hyndburn we aim to inspire young people; improve health and wellbeing; support communities; improve the environment; and encourage sustainable living.

All our projects fit under one of our six themes of sustainability -

Improving Biodiversity...Improve biodiversity and wildlife habitats.

Energy conservation...Promote energy conservation and the use of renewables.

Local Food...Increase the production of locally grown food.

Raising Environmental Awareness...Raising awareness of sustainable development issues.

Sustainable Transport...Encourage greater use of sustainable transport

Waste and Recycling...Increase waste minimisation and recycling.

<https://prospectsfoundation.org.uk/>

Email: info@prospectsfoundation.org.uk

THE WINDFALL FUND...

Grants are available to community groups throughout Hyndburn for environmental projects which will improve the quality of life of local residents and contribute to the sustainable development of the Borough.

<https://prospectsfoundation.org.uk/the-windfall-fund/>

