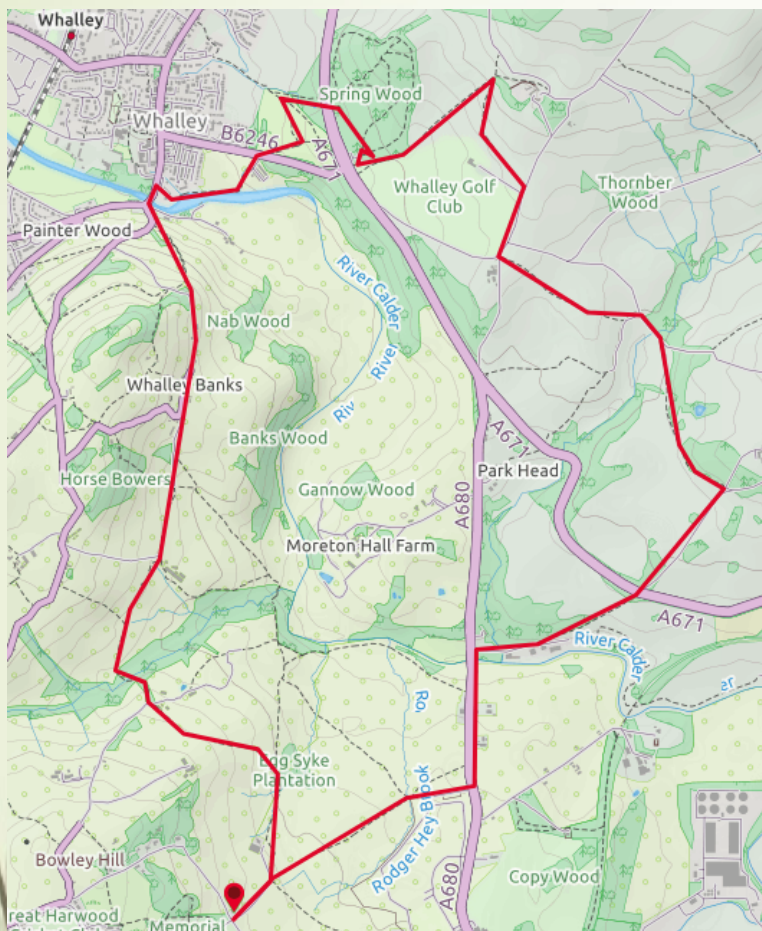


DISCOVER HYNDBURN

Limegals, Witches and Cromwell



A circular walk from Great Harwood Memorial Park via Whalley and Read Lodge. This walk includes a Nature Trail, footpaths, a weir, local history and a place for lunch or a picnic. This walk was first done by Great Harwood PROSPECTS Panel in 2013 as one of their 'Seasonal Walks from Great Harwood'. In September 2014 Howard Ashworth led this walk for The PROSPECTS Foundation's Access to Nature 'Nature Walks Festival'.

Parking: Local road parking at Memorial Park, Church Lane and around the playing field on Allsprings Drive.

Bus Service: 6/7 Park Hotel, Great Harwood

Distance and Approximate Time: 8 miles, 3 to 4 hours.

Terrain: There are some steep bits that are covered in loose stones and leaf fall and during wet weather extreme care is needed. Quite a few stiles.

Map: OS Explorer 287 West Pennine Moors 1:25 000 scale

Key to Facilities: Cafes, Pubs, Tea Rooms in Whalley and Whalley Abbey plus a picnic site and toilets at Spring Wood. Dog friendly.

Please keep dogs on a lead and follow the Country Code.

To get the full version of this map and the FREE route directions you will need ViewRanger. ViewRanger is a digital guide to the outdoors with downloadable route guides, outdoor maps, and powerful GPS navigation features. Their mobile app runs on iPhone, iPad, Apple Watch, and Android smartphones, tablets, and watches. <https://www.viewranger.com/en-gb>



For more information go to www.prospectsfoundation.org.uk For the gpx route use the QRCode on the right



DISCOVER HYNDBURN → Limegals, Witches and Cromwell... Directions page 2

This walk starts at the junction of Church Lane and Allsprings Drive near Allsprings Lodge and there is local road parking around the playing field. With Church Lane behind you start walking down the lane with the lodge cottage on your left.

You will see an interpretation board of the Great Harwood Nature Walk in the garden on your left. Proceed down the lane passing Squires Farm through the footpath gate and then down the field, keeping to the hedgerow on your left, until you reach a kissing gate and footbridge.

The number '3' refers to a note on the Great Harwood Nature Walk map. There is a bench on the left and after this you will see a metal gate diagonally to your left. Take this footpath and do not carry straight on along the Nature Walk.

Once through the metal gate head diagonally left towards the top of the tree on the horizon. Stop when you reach the tree and enjoy the splendid panoramic views around you.

Now head over to the footbridge and then through two stiles which will bring you to a derelict building on your left. Go through the small gate ahead of you and along the back of the Bowley Scout Camp buildings. Leave the camp via the main entrance on to Dean Lane turning almost immediately right on to the cobbled bridleway of the old section of Dean Lane.

Once a pack horse trail, Dean Lane runs from the top of the Cliffe to Whalley making a steep descent and ascent where it crosses Dean Brook. Passing over Dean Bridge in the hollow and up the other side you are following in the path of the old packhorse trail from Whalley.

Most packhorses were Galloways, small, stocky horses named after the Scottish district where they were first bred. Those employed in the lime-carriage trade were known as "limegals"

Once the bridleway levels out take time to enjoy the views on your right. Now proceed along the bridleway to Heys Farm and walk straight ahead at the junction. Do not enter the farm or turn left up the Lane.

After passing a derelict building on your right you will enter a section of the bridleway which is a sunken path over hung with trees which in Winter and Summer can be a guttery pick-your-way through path so take care along this bit of the route.

Follow the bridleway ahead up to Whalley Banks, Dean Lane and then enjoy the views on your right.

Making your way straight ahead you will reach the old farm buildings which are now a hamlet of private houses. Keep straight ahead until the little rock garden on your left and then take the footpath/bridleway on your right.

After a short stretch you will meet a 'Y' junction where the bridleway and footpath split. The bridleway to your left is wider and is bordered by drystone walls on each side. The wall is collapsing on both sides so there are many loose stones and steps down this steep descent to Whalley. Great care must be taken especially in wet weather. The footpath to the right is narrower and the terrain is difficult but easier than the bridleway and you will have glimpses of Whalley and the River Calder below you.

Both these routes meet again as you descend down towards Whalley. Beware of traffic as you join Moor Lane. Turn right towards Whalley Road and then right on to the bridge over the River Calder.

Stop here to read the interpretation board. *Whalley Community Hydro Limited (WCHL) is a community owned scheme that was conceived in 2010 and constructed in 2014.*

<https://www.whalleyhydro.co.uk/>

The project grew out of the Transition Towns movement which has the broad objectives of developing greater community resilience to cope with reduced future availability of fossil fuels and adapting to climate change.

Take time here to consider if you would like to take a break from walking and explore historic Whalley or enjoy your lunch in one of Whalley's establishments! There is a picnic lunch stop at Spring Wood a little further on in the walk...

Once on Whalley Bridge look across the road and you will see Whalley viaduct spanning the river. You are now on King Street and should take the first turning on your right on to Calder Vale and follow the footpath with the river on your right. You will have another view of the River and the Hydro from a small viewing area. If you are lucky you may spot the heron and there will be lots of other wildlife.

Beware of the Giant Hogweed in flower from June to September and do not venture off the path.

This footpath goes to the B6246 Accrington Road where you cross over to join the footpath at the waymarker on the opposite side. Do not walk up Accrington Road to the traffic lights.

Follow the footpath around to your left with the trees on your right and you will reach an entrance to a wood. If you follow the footpath straight ahead which bends to the right you will need to cross the very busy A671. Follow the woodland footpath up hill and under the A671 into Spring Wood Picnic Site & Access for All Trail.

Here you will find several picnic benches, an information centre, there are toilet facilities in the main car park, ancient woodland and lots of wild flowers especially in spring time. The site is managed by Lancashire County Council.

DISCOVER HYNDBURN → Limegals, Witches and Cromwell... Directions page 3

You have reached your lunch stop and you can discover a little bit about the Lancashire Witches here.

Leave Spring Wood by the stile on your left near the traffic light entrance. Turn left up the side of the golf course keeping close to the white markers. Take care, look and listen!

When you reach the footbridge and stile turn left off the golf course on to the Central Loop of The Lancashire Way.

The Lancashire Way is a long distance walk, 294 miles long, divided into three sections or loops and which explores Lancashire's past, its landscape and scenery and many of its great people.
<http://www.lancashireway.com/>

Climb up the hill but do not turn right through any of the landowners access gates. Near the top just before you reach the stile in the corner you will reach a gate. Go through this gate on your right. The wall is now on your left. Turn down the hill towards the fallen tree.

The footpath swings to the left and you will see the golf course club house on your right. Proceed forwards to the metal gate and exit on to the lane. Turn right at the lane and in a short distance you will reach the junction of Whalley Road leading to Sabden. Turn right. This lane is busy so take care.

In a few strides you will reach Portfield so turn left on to Portfield Lane and the stile is on your left. Head over to the corner of the fencing on your right and from here you will see your route ahead with the Sabden road across the field to your left.

You now carry on across the fields via three gates/stiles and when you can see Easterley Farm to your right, Sabden Brook ahead and Read Old Bridge down below you head slightly left to the stile in the corner of the field to join the access track to Easterley Farm. Turn left and then right to join the Old Roman

Road. on your left by Read Old bridge there is a seat. The seat is now in a very poor condition!

Jessica Lofthouse was a well known writer of more than 20 books on the Lancashire countryside and its history. She died in 1988 leaving a bequest to provide seats in the countryside for walkers to rest their weary bones.

The Battle of Read Old Bridge was fought in 1643 between the Royalist and Parliamentary forces. ... The Parliamentary force, numbering only about 400 men, were positioned near Read Old Bridge. The bridge is nicknamed 'Cromwell's Bridge' by local people.

Cross the bridge, go through the kissing gate on the right and follow the track towards Read Hall keeping Coppy Plantation Wood on your left. The last stile/gate will bring you to Read Hall driveway.
https://en.wikipedia.org/wiki/Read_Hall_and_Park

Roger Nowell (1582-1623) of Read Hall was Sherriff of Lancashire in 1610 and the magistrate at the time of the Lancashire Witches in 1612 who sent them to Lancaster Castle for trial and eventual execution.

Turn right down to the Lodge noting the gateway as you meet the A671. Cross the road and on your right you will see a small carved gate stoop as you descend down towards Read Garden Centre and the Cafe By The River on Old Coal Staithe. *A Coal Staithe was a waterside coal depot equipped for loading vessels.*

Time for another cuppa may be? This access road will lead you over the Sabden Brook where it leaves Cock Wood to join the River Calder near Cock Bridge.

Turn left and there is a bit of a walk up the A680 passing the Game Cock on your right and just before

Checcos cross the road at Roger Hey to take the track down to AW Tree Services at Roger Hey Farm which will be on your right.

Further on you will come to three gates. Take the kissing gate on your left and walk straight ahead across the 'long field' to Church Lane. Squires Farm will be on your right. Turn left and you will be back at the start at Allsprings Lodge, Allsprings Plantation.



There is a full version of this walk with photographs and gpx route on ViewRanger. The link is via the QRCode on the front page or <https://tinyurl.com/ydh5kqno>



[More walks are available at: - https://prospectsfoundation.org.uk/walking/](https://prospectsfoundation.org.uk/walking/)

These will be available from ViewRanger as we add them.

Please follow the Countryside Code and leave only your footprints in the countryside.

The five points of the Countryside Code are:

- Be safe, plan ahead and follow any signs. Take maps/guidebooks. ...
- Leave gates and property as you find them. ...
- Protect plants and animals and take your litter home. ...
- Keep dogs under close control. ...
- Consider other people.

We Hope You Enjoyed This Walk



The Countryside Code

Respect other people

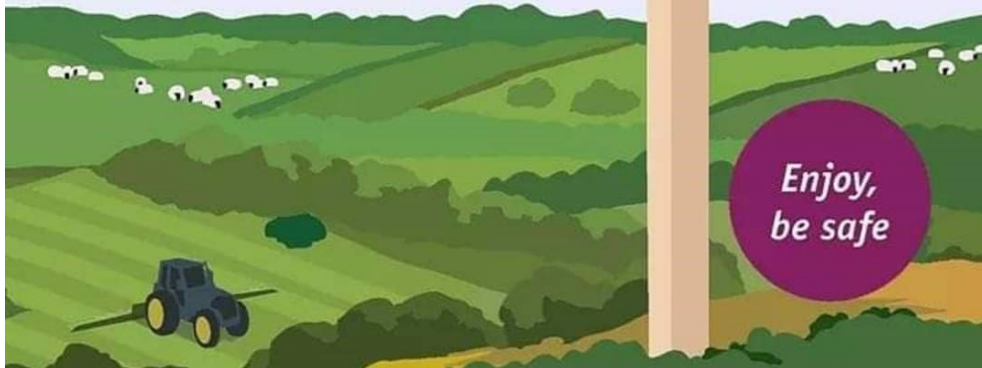
- Consider the local community and other people enjoying the outdoors
- Park carefully so access to gateways and driveways are clear
- Leave gates and property as you find them
- Follow paths but give way to others where it's narrow

Protect the natural environment

- Leave no trace of your visit, take all your litter home
- Don't have BBQs or fires
- Keep dogs under effective control
- Dog poo - bag it and bin it

Enjoy the outdoors

- Plan ahead, check what facilities are open, be prepared
- Follow advice and local signs and obey social distancing measures



The PROSPECTS Foundation is Hyndburn's community owned environmental charity and we are something of a unique and wonderful organisation. We were established by local residents as a company limited by guarantee in 1998 and became a registered charity in 1999.

Our aim is to improve people's quality of life through positive environmental action. By working with a diverse range of groups in Hyndburn we aim to inspire young people; improve health and wellbeing; support communities; improve the environment; and encourage sustainable living.

All our projects fit under one of our six themes of sustainability -

Improving Biodiversity...Improve biodiversity and wildlife habitats.

Energy conservation...Promote energy conservation and the use of renewables.

Local Food...Increase the production of locally grown food.

Raising Environmental Awareness...Raising awareness of sustainable development issues.

Sustainable Transport...Encourage greater use of sustainable transport

Waste and Recycling...Increase waste minimisation and recycling.

<https://prospectsfoundation.org.uk/>

Email: info@prospectsfoundation.org.uk

THE WINDFALL FUND...

Grants are available to community groups throughout Hyndburn for environmental projects which will improve the quality of life of local residents and contribute to the sustainable development of the Borough.

<https://prospectsfoundation.org.uk/the-windfall-fund/>

