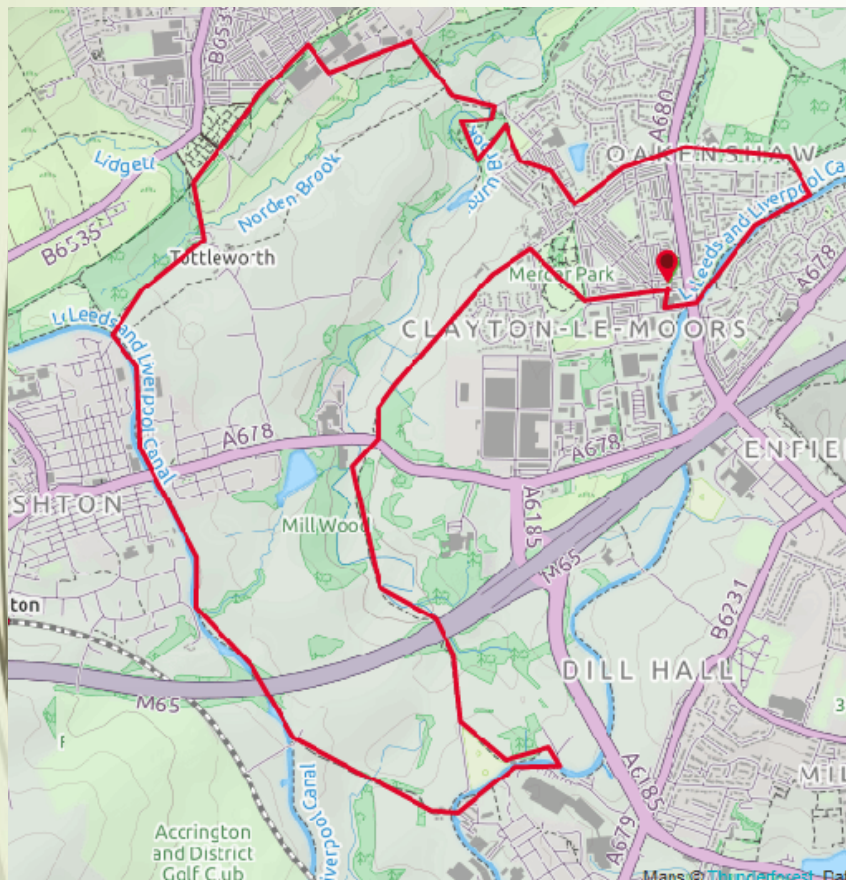


DISCOVER HYNDBURN

Tramway, Canal and Fish Passes



A circular walk from the centre of Clayton-le-Moors via the Dunkenhall Estate to the Leeds-Liverpool Canal, Church Kirk, Rishton, Tottleworth, Great Harwood, Oakenshaw, and Woodlands. There are two fish passes, canal, coal and railway history on this walk with some excellent views and opportunities to engage with nature. The inclines are gentle and for the most part the terrain is good and there are no stiles.

Parking: Local road parking. There is a car park at the rear of the COOP but this is limited to two hours.

Bus Service: 6 & 7, Whalley Road, Bus Stop 2, or Barnes Square, Clayton-le-Moors

Distance and Approximate Time: 7-8 miles, 3 to 4 hours.

Terrain: Gentle inclines, can be muddy near the Hyndburn and across fields.

Map: OS Explorer 287 West Pennine Moors 1:25 000 scale

Key to Facilities: Cafes, Pubs, Tea Rooms Clayton-le-Moors and the Canal Café on the Canal at Rishton.

Please keep dogs on a lead and follow the Country Code.

To get the full version of this map and the FREE route directions you will need ViewRanger. ViewRanger is a digital guide to the outdoors with downloadable route guides, outdoor maps, and powerful GPS navigation features. Their mobile app runs on iPhone, iPad, Apple Watch, and Android smartphones, tablets, and watches. <https://www.viewranger.com/en-gb>



For more information go to www.prospectsfoundation.org.uk For the gpx route use the QRCode on the right



DISCOVER HYNDBURN → Tramway, Canal and Fish Passes... Directions page 2

The walk starts from Barnes Square with Pickup Street and the Post Office behind you. Walk ahead with Wellington Street and the car park on your left. At Church Street turn right.

Walk to the mini roundabout with All Saints Church on your left. Enter Mercer Park with the War Memorial in front of you and follow the main path towards Mercer House.

The house was previously known as Oakenshaw cottage and it was where John Mercer lived towards the end of his life. Mercer, a self-taught chemist who was born and lived in Great Harwood and Clayton-le-Moors, invented the mercerisation process for treating and dyeing cotton which is still in use today and was a pioneer in colour photography.

The grade II-listed Mercer House, was originally donated to the town by Mercer's heirs and was built in 1802 by Thomas Hargreaves.

Leave Mercer Park near the play area at Rishton Road and turn left. Follow the track to the gate and then the footpath (Hyndburn Brook Greenway) with views towards Great Harwood over the fields to the right.

The Hyndburn Brook (from which the borough takes its name) is down the field to your right. This area was also known as Rishtonhalgh.

Cross a wooden footbridge and descend to join the A678 main road by [Holts Mill](#) on Blackburn Road.

Take care as you cross over the road at Holts Mill which was previously known as The Petre Arms and follow the footpath ahead.

On your right is the weir where the Shaw Brook joins the Hyndburn.

Please stick to the footpath as the weir is on private land.

The Dunkenhalgh Weir is a large concave, vertical stone-built weir that lies on Hyndburn Brook and was posing a barrier to the migration of fish.

The Ribble Rivers Trust have created a fish pass at the side of the weir. On the opposite side of the Hyndburn you can see the site of Holt Corn Mill, and it is thought that the weir once provided water for this mill to help power the machines.

More recently the weir provided water for the Rishton Paper Mill.

There was several mine shafts on the Dunkenhalgh estate. There is an old colliery basin between Rishton and Church. The Dunkenhalgh colliery was work until 1872.

Pass over the Hyndburn via the concrete bridge on the footpath. From here you can see the [Dunkenhalgh](#) Hotel..

Continue to the kissing gate and go under the M65 Motorway and up the path until you see Plowtalgh Farm ahead on your right. [Plowtalgh History](#).

Take the path between the hedgerow to your left and follow the hedgerow up the old tramway used to bring the coal up to the canal from Park Pits where a waterwheel was used for winding.

Go through the gate on your left and follow the path.

There is a deep valley on your left and here the canal crosses the valley on a high embankment. In the valley Accrington and Church Sewage Works opened in 1888.

Sludge was removed by boat for many years, a short railway incline being used to raise the sludge up to the canalside tip.

Walk to the swing bridge.

On the canal bank was a boatyard to the left of the swing bridge and you can still see the stonework. To the right of the swing bridge the remains of the tip for Cobby Clough Colliery is visible by the canal.

Cross over the swing bridge and look to the left where you can see Peel Arm which used to serve the print works.

Turn right with the canal on your right and walk towards Church Kirk Bridge.

You will pass the mooring platform built by Church PROSPECTS Panel and the 'Donkey Back Picnic Site' near the back of the church.

The origins of the Parish Church of St. James, Church Kirk, can be traced back as far as the seventh century. The tower of the present church is thought to date from the 13th century.

At the bend you come to the halfway point on the Leeds-Liverpool Canal. There is a mileage marker and some metal sculptures.

Go under the Grade 11 listed Church Kirk Bridge and up the steps. Cross over the bridge.

Note that the canal tow path changes sides here. Where a canal is built on a hillside the canal towpath is usually on the lower side of the canal but from Church to Clayton-le-Moors it is on the upper side.

Lord Petre of Dunkenhalgh only gave permission for the canal to cross his land if the towpath could be on the opposite side of the canal to discourage poachers from his estate.

You are now on the Hyndburn Greenway. Walk down past the farm on your left and follow the tarmac greenway to the canal. On reaching the canal turn right. Walk towards Rishton and enjoy the views on both sides of the canal. Cross over the M65 Motorway along the towpath.

DISCOVER HYNDBURN → Tramway, Canal and Fish Passes... Directions page 3

Continue to the Canal Café at Rishton by the side of Bridge 108A. This is an ideal place to stop for a comfort break.

Continue along the canal until you reach Tottleworth Bridge 108. Leave the canal and take the footpath immediately to your right.

There will be a Ladybird Trail marker on the post on your left, and Norden Valley on your left.

Go down past the allotments on your right. The path is narrow in sections and a bit rough under foot. It can run with water in bad weather.

At the end of the path you will see an old lamp post near where you meet the T junction. You are now in Tottleworth.

Turn left and walk down to the footbridge over the Norden Brook and up towards the old railway line.

Do not go under the railway bridge but go right up the steps onto the old railway line multiuse path. Turn right towards Great Harwood.

*The **Great Harwood Loop line** was opened in 1877 between Great Harwood Junction and Rose Grove. The passenger service ceased in 1957 and goods services in 1968, after which the line was closed between Padiham and Great Harwood Junction, and the track lifted.*

You will pass the cemetery on our left and cross over St John's Street with The Victoria Hotel on your right. Continue along the path with Railway Terrace on our left until you reach the bollards on your left and then turn right down Meadow Street on to Alan Ramsbottom way.

When you reach Gaskell Court and Gaskell Motor Bodies look for the path opposite that will take you down through the allotments to Clayton-le-Moors.

Go over the bridge at Norden Brook and continue on the path up the other side and then drop down until you cross over another bridge at the Hyndburn.

Turn right into the woodland. At the post with the metal waymarker for the Hyndburn Clog turn right and follow the path around the wood until you get to the interpretation board. There is a seat in the wood. At the interpretation board there is another seat but you can walk up the path with the Hyndburn on your right to get a better view of the weir and the fish pass.

This fish pass was also created by the Ribble Rivers Trust. Look out for the heron and kingfisher.

Retrace your steps and at the information board follow the wide path until you see a path going uphill on your right. Take this path up to the kissing gate and turn right.

When you meet the houses turn left onto Bates Street and then right on to Lower Barnes Street past the Willow Close and up to the Forts Arms.

You could enter Mercer Park here and return to the start of the walk if you want a shorter walk but for the full walk turn left at the mini roundabout and walk along Sparth Road until you reach the main A680 Whalley Road.

Cross over at the traffic lights and walk into Woodlands keeping to the right hand path. Cross over the drive to Woodlands Nursing Home, go through the gate and continue ahead through the wood.

When you reach a kissing gate on your right go through it and across towards the houses at the top of Warwick Avenue.

To the left of the houses is a path that leads you up to the Leeds-Liverpool canal.

When you reach the canal turn right and follow the footpath to Whalley Road Bridge No 114b which has a very specific short term mooring, an information board and a seat by the side of the bridge.

Leave the canal through the 'A' frame, turn left and walk down Victoria Street until you reach Church Alley. Turn right and this will take you back to the start at Barnes Square.



There is a full version of this walk with photographs and gpx route on ViewRanger. The link is via the QRCode on the front page or <https://tinyurl.com/ycr8yzn7>



[More walks are available at: - https://prospectsfoundation.org.uk/walking/](https://prospectsfoundation.org.uk/walking/)

These will be available from ViewRanger as we add them.

Please follow the Countryside Code and leave only your footprints in the countryside.

The five points of the Countryside Code are:

- Be safe, plan ahead and follow any signs. Take maps/guidebooks. ...
- Leave gates and property as you find them. ...
- Protect plants and animals and take your litter home. ...
- Keep dogs under close control. ...
- Consider other people.

We Hope You Enjoyed This Walk



The Countryside Code

Respect other people

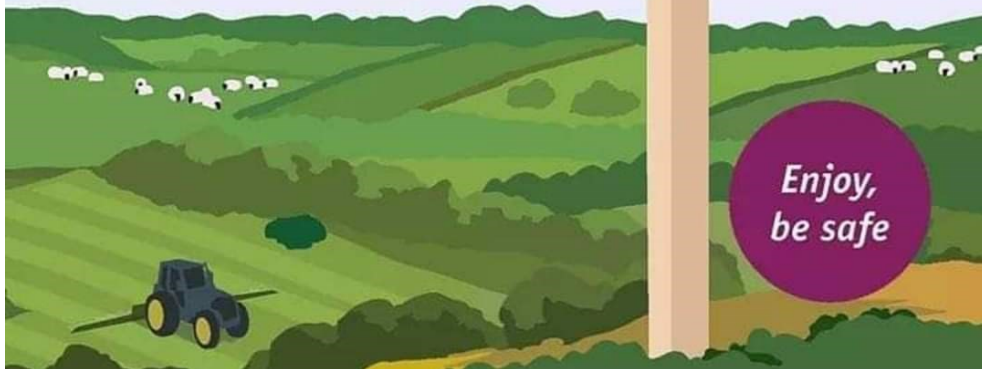
- Consider the local community and other people enjoying the outdoors
- Park carefully so access to gateways and driveways are clear
- Leave gates and property as you find them
- Follow paths but give way to others where it's narrow

Protect the natural environment

- Leave no trace of your visit, take all your litter home
- Don't have BBQs or fires
- Keep dogs under effective control
- Dog poo - bag it and bin it

Enjoy the outdoors

- Plan ahead, check what facilities are open, be prepared
- Follow advice and local signs and obey social distancing measures



Welcome to PROSPECTS

The PROSPECTS Foundation is Hyndburn's community owned environmental charity and we are something of a unique and wonderful organisation. We were established by local residents as a company limited by guarantee in 1998 and became a registered charity in 1999.

Our aim is to improve people's quality of life through positive environmental action. By working with a diverse range of groups in Hyndburn we aim to inspire young people; improve health and wellbeing; support communities; improve the environment; and encourage sustainable living.

All our projects fit under one of our six themes of sustainability -

Improving Biodiversity...Improve biodiversity and wildlife habitats.

Energy conservation...Promote energy conservation and the use of renewables.

Local Food...Increase the production of locally grown food.

Raising Environmental Awareness...Raising awareness of sustainable development issues.

Sustainable Transport...Encourage greater use of sustainable transport

Waste and Recycling...Increase waste minimisation and recycling.

<https://prospectsfoundation.org.uk/>

Email: info@prospectsfoundation.org.uk

THE WINDFALL FUND...

Grants are available to community groups throughout Hyndburn for environmental projects which will improve the quality of life of local residents and contribute to the sustainable development of the Borough.

<https://prospectsfoundation.org.uk/the-windfall-fund/>

