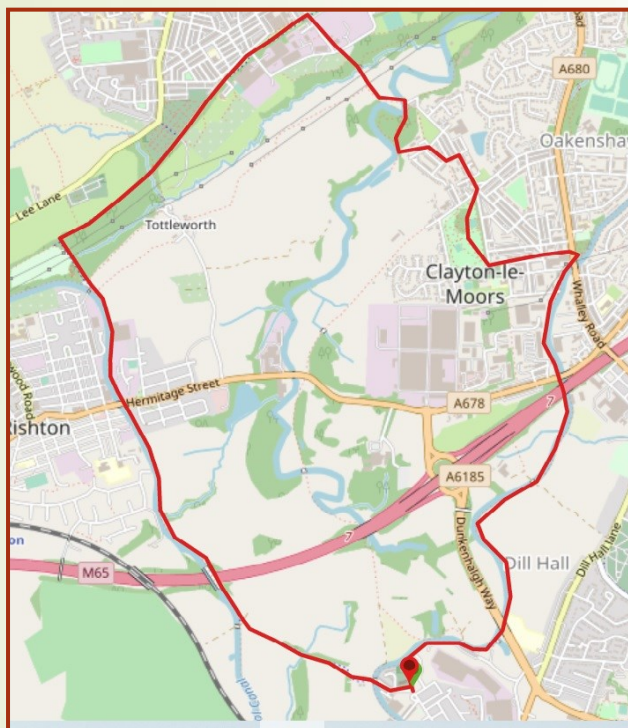


## DISCOVER HYNDBURN

# Church Kirk & Clayton via Canal & Old Railway



A circular walk with historic features along the canal, through woodlands, a dismantled railway line and Hyndburn Greenway. This walk was originally the April Bursting Buds walk developed in 2014 by Great Harwood PROSPECTS Panel and Great Harwood Camera Club as part of the 'Season Walks from Great Harwood'. It was adapted in 2020 for Discover Hyndburn walks with a new start point from Church Kirk

**Parking:** Street parking on Church Street and St James Road, Church Kirk.

**Public Transport:** Nos 6, 6a, 7 from Blackburn and Accrington bus stations. Pilkington's Bus Nos 5, 8.

**Distance and Approximate Time:** 5.5 miles (8.9kms) – 2.5 or 3.5 hours.

**Terrain:** No stiles. Good towpath and multiuser tracks, Some mud in woodlands and some stony uneven public rights of way.

**Map:** OS Explorer 287 West Pennine Moors 1:25 000 scale

**Key to Facilities:** None on route. The nearest toilets are at Hyndburn Leisure Centre. There are shops on Henry Street, Church near the Kirk House bus stop. There is a café along the route.

**Please keep dogs on a lead and follow the Country Code**

To get the full version of this map and the FREE route directions you will need ViewRanger. ViewRanger is a digital guide to the outdoors with downloadable route guides, outdoor maps, and powerful GPS navigation features. Their mobile app runs on iPhone, iPad, Apple Watch, and Android smartphones, tablets, and watches. <https://www.viewranger.com/en-gb>



For more information go to [www.prospectsfoundation.org.uk](http://www.prospectsfoundation.org.uk) For the gpx route use the QRCode on the right



# DISCOVER HYNDBURN → Church & Clayton Canal & Old Railway... Directions page 2

## Information to help you enjoy this walk

There are toilets and the canal Café Rishton but please check opening times before your walk. Closed on Fridays. Cash only. Outdoor seating. Cosy Phone: 07512 346465.

**START** The route starts at Church Kirk Changeline Bridge No 112 on the Leeds Liverpool canal. From the Thorn Inn you can walk down St James Road with the church on your right.

Go down the steps on to the canal towpath and under the bridge.

*Church Kirk Changeline Bridge No 112 area [canal history](#) by Mike Clarke. The bridge is a Grade 11 listed building c.1810. Made of coursed sandstone blocks with an elliptical arch with rusticated voussoirs, bands, parapets with ridged copings (renewed on south side). At the end on south side are sloped retaining walls (curved on east side) and steps to the towpath, which changes sides here.*

**Walk** past the metal artworks.

*These artworks mark the exact halfway point on the Leeds/Liverpool Canal. Financed by the Church PROSPECTS Panel as part of the Picnic Site 100 yards away at Donkey Back, the designs were done by local schoolchildren and represent barge hull shapes and local wildlife.*

The Donkey Bank picnic area is on your right and there is a mooring and viewing platform by the towpath.

*Donkey Back Picnic Site and mooring was made by the Church PROSPECTS Panel on the Leeds Liverpool Canal more than 17 years ago.*

Walk along the towpath via Church Swing Bridge No 113, Peel Bank Arm (disused), Peel Bank Bridge No 113A (See canal history by Mike Clarke). Continue via Rileys Pipe Bridge, Rileys Swing Bridge No 114, Motorway Bridge No 114AA.

*The bridge known as Riley swing bridge was built as an accommodation bridge for nearby farms. It is a balanced cantilever swing bridge*

At Enfield Changeline Bridge No 114A leave the towpath and walk over the bridge to re-join the footpath at Enfield Wharf.

*A roving bridge, changeline bridge or turnover bridge is a bridge over a canal constructed to allow a horse towing a boat to cross the canal when the towpath changes sides. This often involved unhitching the tow line.*

*It is thought that Clayton-le-Moors developed with the fusion of the two hamlets of Oakenshaw (bottom end) and Enfield (top end) which began during the construction of the Leeds Liverpool Canal, which pre-dated the railways.*

*The merger continued with the development of the cotton textile industry, particularly that of weaving and cloth finishing. The stretch of canal between Burnley - Enfield Wharf (now alongside the Enfield Bridge on Blackburn Road) was opened in 1801. By 1808 it had been extended to Church.*

Now walk towards Whalley Road Bridge No 114B.

Just before Whalley Road Bridge you will see a metal fence and an exit on your left on to Chequers. Walk along Chequers until you can see the school. Turn right along Winckley Street (with the school on your left) and then turn left on to Church Street and walk towards All Saints Church.

Turn right and enter Mercer Park via the gates with the War Memorial in front of you

*Mercer House (1842) house was previously known as Oakenshaw cottage and it was where John Mercer lived towards the end of his life. Mercer, a self-taught chemist who was born and lived in Great Harwood and Clayton-le-Moors, invented the mercerisation process for treating and dyeing cotton which is still in use today and was a pioneer in colour photography. The grade II-listed Mercer House and built in 1802 by Thomas Hargreaves. was donated to the town by Mercer's heirs.*

Walk through the park and exit through the gates at the corner of Rishton Road and Grange Street. Passing the Forts Arms on your left walk down Lower Barnes Street until you reach Bates Street and turn left. Take the first right to walk between the backs of the houses – this is actually a public footpath.

The footpath will become a track. Continue downhill and on the left, you will see a kissing gate. Turn left at the gate and walk downhill through the wood until you reach the path at the bottom and then turn left.

This will bring you out at the weir and fish pass. There is an information board and seat.

*This fish pass was created by the Ribble Rivers Trust. Look out for the heron and kingfisher.*

## DISCOVER HYNDBURN → Church & Clayton Canal & Old Railway... Directions page 3

Retrace your steps and go along the wide footpath until you reach a large gate/barrier. You are now at the junction of Lower Barnes Street and Holmes Road.

Take the bridge on your left and go over the Hyndburn and walk up hill on the stony footpath, cross over Norden Brook and stay on the path until you reach Alan Ramsbottom Way opposite the industrial units.

*Alan Ramsbottom (born 30 April 1936) was a professional racing cyclist from Clayton-le-Moors, England, who twice rode the Tour de France.*

*In 1966 he returned to Britain because a glut of unemployed professionals on the Continent pushed wages lower than he thought necessary for a married man with two children.*

*He moved to Great Harwood and went back to his former trade as a sewing machine mechanic, working in textile factories. At weekends he rode for domestic professional teams. [More information.](#)*

Turn left and walk to the end of the road and at the bend turn right on to Meadow Street.

When you reach the multiuser path turn left. Keeping the houses on your right walk along the path until you reach St John's Street. You will see the Victoria (also known as Butcher Brig) on your left.

*Great Harwood was once on the railway line from Blackburn to Burnley via Padiham – The North Lancs or Great Harwood Loop of the Lancashire and Yorkshire Railway.*

*The Great Harwood Loop line was opened in 1877 between Great Harwood Junction and Rose Grove. The last passenger train ran in November 1957 and goods traffic in 1964. after which the line was closed between Padiham and Great Harwood Junction, and the track lifted. The Martholme Viaduct on the line remains about one mile north east.*

This old railway line path is known locally as the White Path. You will pass an old cemetery and the council cemetery on your right and drop down to a bridge that goes over the narrow Tottleworth Lane.

Continue ahead through Norden Valley until you reach an open grass area with a football pitch.

Turn left and walk towards Tottleworth Bridge No 108. Turn left and join the canal towpath.

The next bridge is Rishton Bridge No 108A also known locally as Hermitage Street Bridge and the Canal Café Bridge.

*There are toilets and refreshments available at the Canal Café. It is a popular spot for walkers, cyclists, residents and there is a mooring platform for narrow boats.*

After your break continue along the towpath passing Rishton Winding Hole, Dunkenhalgh Aqueduct No 108AA northern and southern ends over the motorway and Dunkenhalgh Aqueduct Winding Hole.

You will reach New Barn Bridge No 109 which is in a poor condition.

*A **winding hole** is a widened area of a canal, used for turning a canal boat such as a narrowboat. Winding a boat whether on a canal or on the sea meant to rotate the boat or ship using the action of the wind.*

At New Barn Bridge No 109 turn left along the Hyndburn Greenway. *Enjoy the views as you walk along the Greenway. Across the valley you will see St James Church and Church Kirk ahead of you.*

Go through the gate at the farm and this will bring you back to Church Kirk Changeline Bridge No 112. Now walk ahead over the bridge and make your way back to the Thorn Inn and the start.

### We Hope You Enjoyed This Walk



There is a full version of this walk with photographs and gpx route on ViewRanger. The link is via the QRCode on the front page or this

[LINK](#)



[More walks are available at: -  
https://prospectsfoundation.org.uk/  
walking/](https://prospectsfoundation.org.uk/walking/)

These will be available from ViewRanger as we add them.

Please follow the Countryside Code  
"Take **only** photographs and memo-  
ries and **leave only footprints**"





# The Countryside Code

## Respect other people

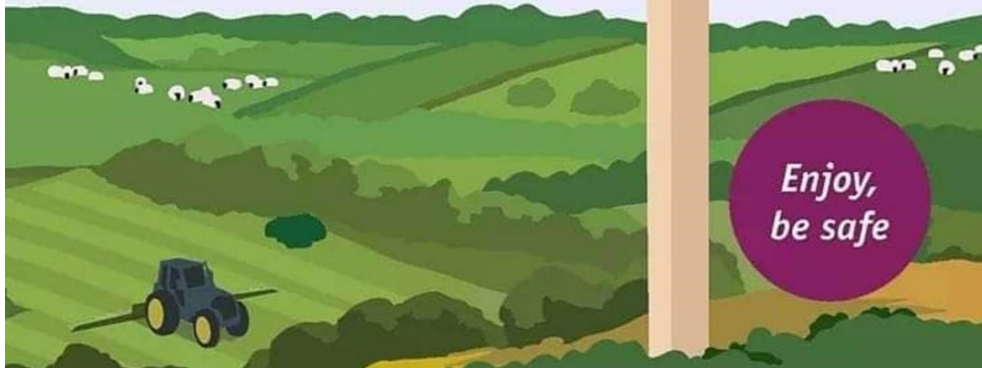
- Consider the local community and other people enjoying the outdoors
- Park carefully so access to gateways and driveways are clear
- Leave gates and property as you find them
- Follow paths but give way to others where it's narrow

## Protect the natural environment

- Leave no trace of your visit, take all your litter home
- Don't have BBQs or fires
- Keep dogs under effective control
- Dog poo - bag it and bin it

## Enjoy the outdoors

- Plan ahead, check what facilities are open, be prepared
- Follow advice and local signs and obey social distancing measures



The PROSPECTS Foundation is Hyndburn's community owned environmental charity and we are something of a unique and wonderful organisation. We were established by local residents as a company limited by guarantee in 1998 and became a registered charity in 1999.

Our aim is to improve people's quality of life through positive environmental action. By working with a diverse range of groups in Hyndburn we aim to inspire young people; improve health and wellbeing; support communities; improve the environment; and encourage sustainable living.

**All our projects fit under one of our six themes of sustainability -**

**Improving Biodiversity...**Improve biodiversity and wildlife habitats.

**Energy conservation...**Promote energy conservation and the use of renewables.

**Local Food...**Increase the production of locally grown food.

**Raising Environmental Awareness...**Raising awareness of sustainable development issues.

**Sustainable Transport...**Encourage greater use of sustainable transport

**Waste and Recycling...**Increase waste minimisation and recycling.

<https://prospectsfoundation.org.uk/>

Email: [info@prospectsfoundation.org.uk](mailto:info@prospectsfoundation.org.uk)

## THE WINDFALL FUND...

Grants are available to community groups throughout Hyndburn for environmental projects which will improve the quality of life of local residents and contribute to the sustainable development of the Borough.

<https://prospectsfoundation.org.uk/the-windfall-fund/>

