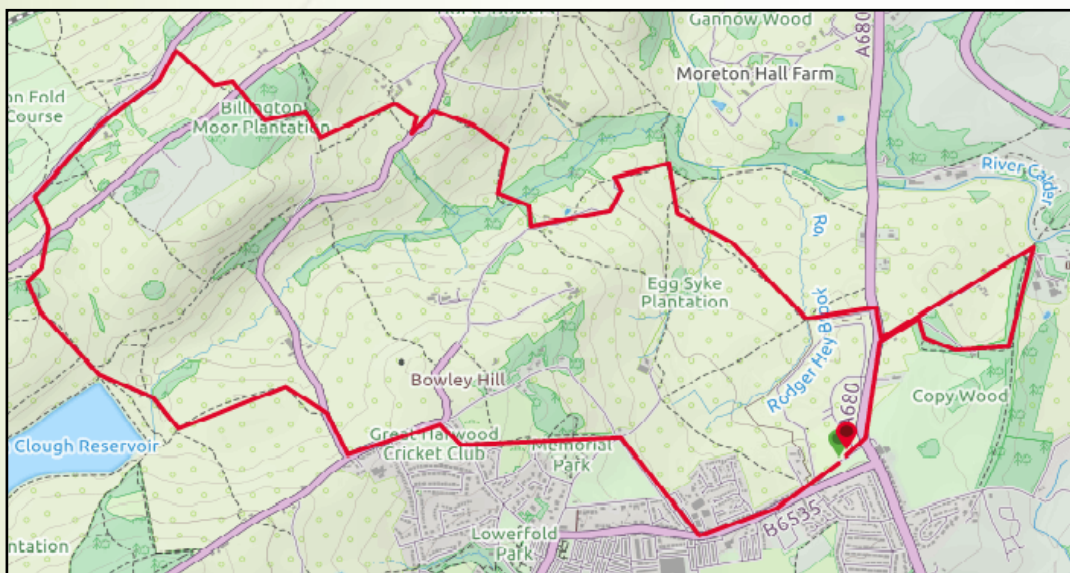


DISCOVER HYNDBURN

Black Hill, Plantation and a Viaduct

A circular walk from Harwood Lane, Great Harwood. This walk includes footpaths, local history, Dean Brook, the Black Hill, Billington Moor Plantation, a section of a Nature Walk and Martholme Viaduct. This walk was first done by Great Harwood PROSPECTS Panel in March 2014 as the March Hares walk, one of the 'Seasonal Walks from Great Harwood'.



Parking: Local road parking at Harwood Lane B6535.

Bus Service: 6/7 Lyndon House, Great Harwood

Distance and Approximate Time: 8 miles, 3 to 4 hours.

Terrain: There is one steep bit but the view is magnificent. Quite a few stiles. One road walking section on Whalley Old Road.

Map: OS Explorer 287 West Pennine Moors 1:25 000 scale

Key to Facilities: No facilities on this walk. If Bowley Camp is open you may be able to use their facilities if you ask them. Dog friendly.

Please keep dogs on a lead and follow the Country Code.

To get the full version of this map and the FREE route directions you will need ViewRanger. ViewRanger is a digital guide to the outdoors with downloadable route guides, outdoor maps, and powerful GPS navigation features. Their mobile app runs on iPhone, iPad, Apple Watch, and Android smartphones, tablets, and watches. <https://www.viewranger.com/en-gb>



For more information go to www.prospectsfoundation.org.uk For the gpx route use the QRCode on the right



DISCOVER HYNDBURN → Black Hill, Plantation and a Viaduct... Directions page 2

This walk starts at the junction of Harwood New Road/ Harwood Lane B6535 and Lyndon Avenue between the information board and the bus stop. With your back to Lyndon House cross over the B6535 and walk down the access road with Deyne Court detached house on your right.

SD743329 There is a stile on your left. Go through the stile and walk diagonally towards a line of trees and cross the little footbridge.

Keeping the backs of the houses to your left cross the field with the fence line in front of you but bear right and in the corner, you will reach a gate. It can be very wet in this area.

Once through the gate keep the hedgerow on your left and walk towards the metal gates on to Church Lane near Squires Farm.

SD738332 Now turn left and walk up Church Lane until you pass Allsprings Lodge on your right and reach the first entrance to Memorial Park.

Walk up the main path through the park and exit at The Cobbles Cottage.

Do not go left along Hindle Fold Lane. Take the stile ahead of you into the field. Keep the hedgerow on your left, go past the house until you reach the stile at the rear of the Dog and Otter pub.

SD730331 With the pub on your left walk towards Cliffe Lane and cross over into the Cricket Club grounds.

Make your way along the track to the back of the Club House. When you meet a fence in front of you there are a few steps on your right up to a small gate on to Blackburn Old Road.

Take care as you step down on to the narrow footpath and remember to bolt the gate behind you.

Turn left, keep on this side of the road, and when you see the bench at the top of Goldacre Lane cross over and walk down Goldacre Lane.

SD725332 You will reach a gate on your left. This is the access road to Dean Reservoir and used by United Utilities vehicles and a local farmer.

Make your way along the track going left and then right around the bends. Just before you reach the gates for the reservoir you will turn right.

SD 720331 This footpath leads you down to the Dean Brook with views of the reservoir to your left.

SD718333 At Dean Brook go over the stile and through a gate then take the left-hand footpath up hill to meet the footpath at the corner of the reservoir.

SD717333 Turn right and take the footpath up towards Whittle Hall known locally as the old mink farm.

Go through the gate and immediately bear right around the edge of the field until you reach a wide gate on your right that leads you through Whittle Hall. The hall is on your right with stables on the left.

Safety Note: If you have children with you we suggest you walk along Moor Lane until you reach Billington Moor Plantation and the top of the Black Hill. SD722345.

SD 715339 This brings you out on to Moor Lane. Turn right and immediately left down a footpath that will bring you to a gate with a bit of an awkward stile. Over the stile cross the field with the hedgerow on your left to a stile in the corner.

Be careful here as some of the stones on the far side of the stile can be slippery when wet and some of them wobble!

Go through the stile in the corner and into the woodland. Then follow the woodland path down to Whalley Old Road.

Whalley Old Road is a well used B road and the cars travel at great speed. Turn right and keep well in on the right hand side. Listen and look at all times.

Proceed along Whalley Old Road for half a mile until you see a stile on your right. Hollin Hall will be on your left a little further along.

SD719346 Over the stile and climb up the hill. go over the drystone wall and continue ahead. There is an outcrop of rocks here where you can sit and enjoy the views and your lunch.

Note: People who have walked along Moor Lane to Billington Moor Plantation on their right can go through the stile on their left towards the top of Black Hill and join you there to enjoy the views.

On a clear day you will have a wonderful panoramic view. Straight ahead you can see the copper domed towers of Stonyhurst College and Longridge Fell beyond. This is the best place on the walk to take a break.

Continue towards Moor Lane and go through the metal kissing gate. You are now on a section of The Hyndburn Clog—Stage 6. Cross over Moor Lane and enter Billington Moor Plantation. The path through the plantation is very clear and will take you to a metal kissing gate.

Through the kissing gate bear right to another metal gate by a brook. Walk straight ahead and you will see a stile on your left.

Note: Do not go straight ahead. Go over the stile on your left towards the farm. The landowner occasionally has signs out and if this is the case follow the directions to Shawcliffe Lane.

DISCOVER HYNDBURN → Black Hill, Plantation and a Viaduct... Directions page 3

SD725342 Watch out for lots of stones in this area. Keep the stone wall and hedgerow on your left and walk down hill towards Lower White Carr Farm and go over a footbridge.

Shortly after the footbridge you will see a line of trees and gorse. Turn right when you reach these and make your way to the stile that will bring you out on Shawcliffe Lane.

SD728343 Turn left onto Shawcliffe Lane.

At the farm buildings on your right go through the kissing gate and walk down hill to Dean Lane which is now a bridleway.

SD732342 turn right. You are now walking along a section of the Great Harwood Nature Walk. Continue along the bridleway over Dean Bridge and up to the tarmac section of Dean Lane.

SD733339 Turn left and walk through Bowley Scout Camp. You will be walking towards the River Calder. At the end of the scout camp track go through the metal gate and turn right. There is a stone seat with a kissing gate to the right of the seat.

Note: If you have children walking with you then at this point you may prefer to turn left and walk along the River Calder, crossing over Egg Syke Brook via a footbridge to reach a kissing gate at the A680 Whalley Road near The Gamecock. Here you cross over the busy main road and turn right up to Checco's Restaurant.

At the stone seat go through the kissing gate and carry straight on over a stream and just before you reach a stile you turn left.

SD738340 Turn off the Nature Walk footpath and walk across the field in a SE direction crossing over Egg Syke Brook.

SD739339 Over the brook climb up to where the land levels off and you can see a large tree on your left. Keep to the right of the tree. Continue in the same direction until you can see the metal gate and stile and beyond that Roger Hey Farm.

SD742337 Continue on the farm track until you arrive at Roger Hey Brook where four footpaths meet. Take the farm track on your left past Roger Hey Farm to the A680 Whalley Road. Cross the main road and turn right up to Checco's Restaurant. Look to your left and you will get your first glimpse of Martholme Viaduct.

To Finish: At Checco's you can carry straight on to the garage, cross over Whalley Road and walk up Harwood New Road to Harwood Lane and back to the start of the walk.

To Continue: To follow the full walk turn left at Checco's and walk down Martholme Lane until you reach the viaduct. Take time to enjoy the construction of the arches. Climb the steps to the Martholme Greenway footpath and as you turn left stop to read the information board by the gated entrance.

Martholme Viaduct is a 19th-century Grade 11 listed railway viaduct. The viaduct was constructed between 1870–77 by engineer Sturges Meek to carry the old Great Harwood loop railway track near to the site of Martholme pit/colliery. It has been used as a TV set in ITV's Paranoid and the viaduct scenes in the Netflix drama The Stranger.

Walk along the viaduct and enjoy the great views on either side. You can see Martholme Manor below.

The Grade 11 listed Martholme Manor is a stone medieval house. It has a timber framed kitchen range (stone clad 1577), Elizabethan gatehouse, walled outer courtyard and dry moat.

You now need to walk back to the entrance. Leave the viaduct but do not go down the steps and instead walk along the tree lined Greenway path until you see a footpath on your right.

Take this path and then one of the various paths back to Martholme Lane. There are information boards depicting the coal mining history at various locations.

Walk back up to Checco's and follow **Finish**.



There is a full version of this walk with photographs and gpx route on ViewRanger. The link is via the QRCode on the front page or <https://tinyurl.com/ybjhwmwr>



[More walks are available at: - https://prospectsfoundation.org.uk/walking/](https://prospectsfoundation.org.uk/walking/)

These will be available from ViewRanger as we add them.

Please follow the Countryside Code and leave only your footprints in the countryside.

The five points of the Countryside Code are:

- Be safe, plan ahead and follow any signs. Take maps/guidebooks. ...
- Leave gates and property as you find them. ...
- Protect plants and animals and take your litter home. ...
- Keep dogs under close control. ...
- Consider other people.

We Hope You Enjoyed This Walk



The Countryside Code

Respect other people

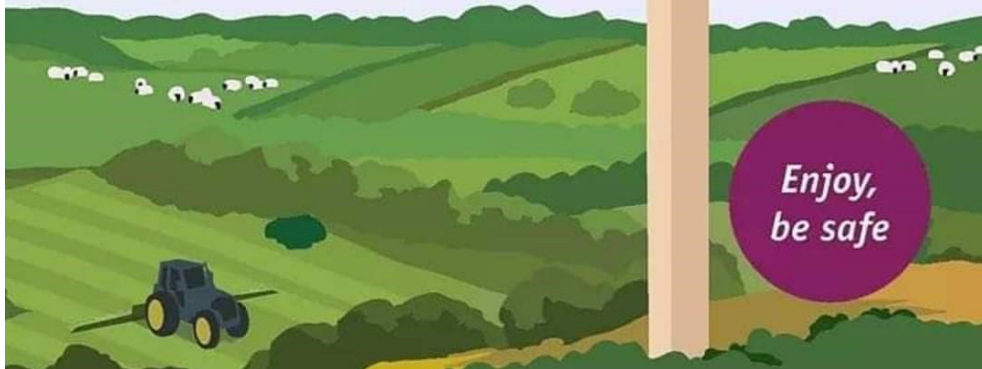
- Consider the local community and other people enjoying the outdoors
- Park carefully so access to gateways and driveways are clear
- Leave gates and property as you find them
- Follow paths but give way to others where it's narrow

Protect the natural environment

- Leave no trace of your visit, take all your litter home
- Don't have BBQs or fires
- Keep dogs under effective control
- Dog poo - bag it and bin it

Enjoy the outdoors

- Plan ahead, check what facilities are open, be prepared
- Follow advice and local signs and obey social distancing measures



Welcome to PROSPECTS

The PROSPECTS Foundation is Hyndburn's community owned environmental charity and we are something of a unique and wonderful organisation. We were established by local residents as a company limited by guarantee in 1998 and became a registered charity in 1999.

Our aim is to improve people's quality of life through positive environmental action. By working with a diverse range of groups in Hyndburn we aim to inspire young people; improve health and wellbeing; support communities; improve the environment; and encourage sustainable living.

All our projects fit under one of our six themes of sustainability -

Improving Biodiversity...Improve biodiversity and wildlife habitats.

Energy conservation...Promote energy conservation and the use of renewables.

Local Food...Increase the production of locally grown food.

Raising Environmental Awareness...Raising awareness of sustainable development issues.

Sustainable Transport...Encourage greater use of sustainable transport

Waste and Recycling...Increase waste minimisation and recycling.

<https://prospectsfoundation.org.uk/>

Email: info@prospectsfoundation.org.uk

THE WINDFALL FUND...

Grants are available to community groups throughout Hyndburn for environmental projects which will improve the quality of life of local residents and contribute to the sustainable development of the Borough.

<https://prospectsfoundation.org.uk/the-windfall-fund/>

